



ASEAN COMMUNITY IN FIGURES

ACIF 2010



ASSOCIATION OF SOUTHEAST ASIAN NATIONS

The Association of Southeast Asian Nations (ASEAN) was established on 8 August 1967. The Member States of the Association are Brunei Darussalam, Cambodia, Indonesia, Lao PDR, Malaysia, Myanmar, Philippines, Singapore, Thailand and Viet Nam. The ASEAN Secretariat is based in Jakarta, Indonesia.

For inquiries, contact:
The ASEAN Secretariat
Public Outreach and Civil Society Division
70A Jalan Sisingamangaraja
Jakarta 12110
Indonesia
Phone : (62 21) 724-3372, 726-2991
Fax : (62 21) 739-8234, 724-3504
E-mail : public.div@asean.org

General information on ASEAN appears online at the ASEAN Website: www.asean.org

Catalogue-in-Publication Data

ASEAN Community in Figures (ACIF) 2010
Jakarta: ASEAN Secretariat, April 2011

315.95

1. Statistics – ASEAN
2. Economics - Social - Environment

ISBN 978-602-8411-59-2

The text of this publication may be freely quoted or reprinted with proper acknowledgment.

Copyright Association of Southeast Asian Nations (ASEAN) 2010
All rights reserved

Foreword

The ASEAN Community in Figures (ACIF) 2010 is the third edition of the continuing series of statistical updates about the peoples, societies and economies of ASEAN Community and its Member States. This publication features statistical information on key characteristics and trends in the ASEAN Community's general economy, trade, investment, and tourism industry as well as on its population and labour force and their state of health education and poverty.

The ACIF is purposely designed to be a handy alternative to the more comprehensive annual ASEAN Statistical Yearbook, and hence presents only a selection of the most sought-after or commonly-used statistical indicators in the most recent years. For users' convenience it also provides brief analysis of some key indicators.

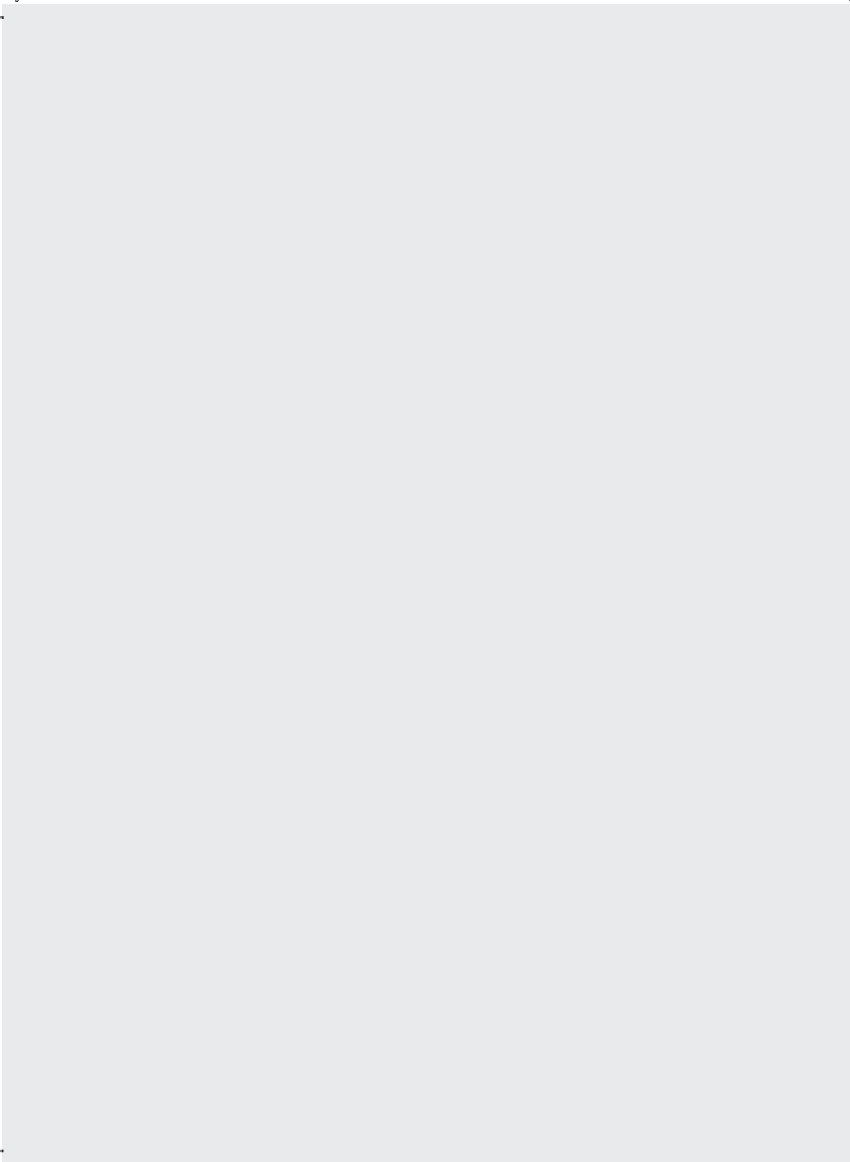
We appreciate and value your comments and suggestions for the continuous improvement of this publication and other statistical products and services of the ASEAN Secretariat.

Dr. Surin Pitsuwan
Secretary-General of ASEAN
Jakarta, Indonesia
October 2010

TABLE OF CONTENTS

01.	ASEAN and the world	Page
Table 1	ASEAN population, territory and economy, 2009	1
Table 2	ASEAN population and economy compared with those of selected trading partner countries/regions 2009, and estimated 2010 GDP	2
Table 3	Trends of per capita GDP in ASEAN and selected trading partner countries/regions	3
Table 4	ASEAN GDP, rate of growth, and share of CLMV	4
Table 5	CPI and its selected components in ASEAN6, 2005-2009	5
Table 6	Inflation rate (year-on-year change of the Consumer Price Index), end period (in percent)	6
Table 7	Lending rates in ASEAN (in percent)	7
Table 8	Exchange rates in ASEAN (in national currency per US\$ 1), average of period	8
<hr/>		
02.	ASEAN trade aggregated	
Table 9	Share of international trade to overall ASEAN economy	9
Table 10	ASEAN Balance of trade with selected trading partner countries	10
Table 11	Trade by ASEAN Member States	11
Table 12	Export and Import by ASEAN Member States	12
Table 13	Trade Balance by ASEAN Member States	13
<hr/>		
03.	ASEAN trade dependency	
Table 14	Trade value by selected trade partner countries, ranked according to the 2009 levels (US\$ million)	14
Table 15	ASEAN Trade with selected partner countries, ranked according to the 2009 shares (in percent)	15
Table 16	ASEAN Member States Export to ASEAN+3, 2009	16
Table 17	ASEAN Member States Import from ASEAN+3, 2009	17
Table 18	ASEAN Member States Trade with ASEAN+3, 2009	18
Table 19	ASEAN Member States Export to Other Selected Trade Partner Countries, 2009	19
Table 20	ASEAN Member States Import from Other Selected Trade Partner Countries, 2009	20
Table 21	ASEAN Member States Trade with Other Selected Trade Partner Countries, 2009	21
Table 22	Share of ASEAN Member States Export by Selected Trade Partner, 2009, (in percent)	22
Table 23	Share of ASEAN Member States Import by Selected Trade Partner, 2009, (in percent)	23
Table 24	Share of ASEAN Member States Trade by Selected Trade Partner, 2009, (in percent)	24
Table 25	Top 20 ASEAN exported commodities (based on 4-digit Harmonised System codes), 2009	25
Table 26	Top 20 ASEAN imported commodities (based on 4-digit Harmonised System codes), 2009	26
Table 27	Commodities with high-significant share in ASEAN trade, 2009	27

04.	ASEAN trade liberalisation	Page
Chart 1	Average tariff rates on imports from ASEAN	30
Chart 2	Percent of tariff lines in the CEPT* Inclusion List (IL)	31
Chart 3	Percent of items in the CEPT* Inclusion List (IL) with 0 tariff	32
<hr/>		
05.	ASEAN trade in priority integration sectors	
Table 28	Trend of ASEAN exports of its seven priority integration sector's products.	33
Table 29	Trend of intra-ASEAN export of its seven priority integration sector's products	34
<hr/>		
06.	ASEAN foreign direct investment	
Table 30	Trend of foreign direct investment (FDI) inflows in ASEAN	35
Table 31	Trend of FDI inflow into ASEAN by host country (in US\$ million)	36
Table 32	Trend of FDI inflow into ASEAN by source country (in US\$ million)	37
<hr/>		
07.	ASEAN tourism	
Table 33	Trend in tourist arrivals by host country (in thousand)	38
Table 34	Rate of growth of tourist arrivals in ASEAN (in percent)	39
Table 35	Tourist arrivals by country of origin, sorted by the 2009 shares	40
<hr/>		
08.	ASEAN telecommunications	
Table 36	ASEAN internet subscribers/users per 1000 persons	41
Chart 4	Internet subscribers/users per 1000 Persons	42
Table 37	Cellular/mobile phone density (number of units per 1000 persons)	43
Chart 5	Cellular/mobile phone density (per 1000 persons)	44
<hr/>		
09.	ASEAN social development	
Table 38	Distribution of ASEAN Population by Age Group, 2009	45
Table 39	Percentage of Population living under PPP \$1.25 and \$2 a day, 2000-2008 (in percent)	46
Table 40	Poor population based on National Poverty Line	47
Table 41	Gini coefficient in ASEAN Member States (in percent)	48
Table 42	Life expectancy at birth (years)	49
Table 43	Infant mortality rate (per 1000 live births)	50
Table 44	Government health expenditure as percentage of GDP (in percent)	51
Table 45	Prevalence of under weight children under 5 year of age (in percent)	52
Table 46	Adult literacy rate 15 Years old and above (in percent)	53
Table 47	Net primary enrolment rate (in percent)	54
Table 48	Unemployment rate by gender (in percent)	55
Table 49	Labour force participation rate by gender (in percent)	56
Table 50	Employment by sector (in percent)	57
Table 51	Employment by sector (in percent)	58
Table 52	Population with access to safe drinking water (in percent)	59
Table 53	Population with access to sanitation facilities (in percent)	60
Table 54	Protected Areas as Percentage of Total Land Area	61



01. ASEAN and the World

Table 1
ASEAN population, territory and economy, 2009

Country	Total land area (sq km)	Total population (thousand)	GDP at current market prices		GDP per capita	
			(US\$ Mn)	(in US Million PPP ² \$)	(US\$)	(PPP\$)
Brunei Darussalam	5,765	406	10,759	20,071	26,486	49,411
Cambodia	181,035	14,958	10,359	26,935	693	1,801
Indonesia	1,860,360	231,370	546,865	967,220	2,364	4,180
Lao PDR	236,800	6,128	5,579	14,398	910	2,350
Malaysia	330,252	28,307	193,108	384,787	6,822	13,594
Myanmar ^{1/}	676,577	59,534	24,973	65,093	419	1,093
Philippines	300,000	92,227	161,358	325,105	1,750	3,525
Singapore	710	4,988	182,702	248,212	36,631	49,766
Thailand	513,120	66,903	264,323	540,054	3,951	8,072
Viet Nam	331,051	86,025	96,317	267,611	1,120	3,111
ASEAN	4,435,670	590,844	1,496,341	2,859,487	2,533	4,840
CLMV	1,425,463	166,645	137,228	374,037	823	2,245
ASEAN6	3,010,207	424,200	1,359,113	2,485,450	3,204	5,859

Notes:

1. Myanmar: US\$-Kyat exchange rate is based on the parallel rate as used in IMF-WEO April 2010
2. The PPP dollar takes into account differences in purchasing power of the US dollar in the countries. Take GDP per capita of Thailand and Singapore as example: even if the GDP per capita of Thailand is only around one-ninth that of Singapore (\$3,951 compared to \$36,631), if the purchasing power of the US dollar is taken into account, the GDP per capita of Thailand would be around one-sixth of Singapore (\$8,072 compared to \$49,766), because one US dollar in Thailand can buy more goods and services than one US dollar in Singapore.

Sources: ASEAN Finance and Macroeconomic Surveillance Database and IMF-World Economic Outlook April 2010

» In 2009 CLMV's population was about 28% that of ASEAN; their economy size, however, was only less than 9% that of ASEAN.

» The per capita GDP in CLMV was approximately US\$ 823, which was a quarter that of ASEAN6, which amounted to around US\$ 3,204. Viet Nam has experienced a promising economic development and its per capita GDP reached US\$ 1,120 in 2009.

01. ASEAN and the World

Table 2
ASEAN population and economy compared with those of selected trading partner countries/regions 2009, and estimated 2010 GDP

Country	Population million persons	GDP		Estimated 2010 GDP US\$ billion
		US\$ billion	PPP\$ billion	
Absolute Number				
ASEAN	590.8	1,496	2,85	1,719
China	1,334.7	4,909	8,765	5,365
Japan	27.6	5,068	4,159	5,273
Republic of Korea	48.8	833	1,364	991
India	1,199.1	1,236	3,526	1,367
Australia	21.9	997	851	1,193
New Zealand	4.3	118	115	136
USA	307.4	14,256	14,256	14,800
EU27	497.6	16,447	14,794	16,543
Ratio of ASEAN to Trading Partners				
ASEAN	1.00	1.00	1.00	
China	0.44	0.30	0.33	
Japan	4.63	0.30	0.69	
Republic of Korea	12.12	1.80	2.10	
India	0.49	1.21	0.81	
Australia	27.01	1.50	3.36	
New Zealand	136.74	12.70	24.78	
USA	1.92	0.10	0.20	
EU27	1.19	0.09	0.19	

Notes: 1. PPP dollar is dollar value that has taken into account the differences in the purchasing power of the US dollar in the countries.
 2. EU27 is used

Sources: ASEAN Finance and Macroeconomic Surveillance Database and IMF-World Economic Outlook April 2010

» In 2009 ASEAN's population was nearly twice that of the USA, one -fifth more than that of EU27, nearly 5 times that of Japan but only half of India's and less than half of China's population

» The ASEAN economy was less than one-third of Japan's or China's, and around 10% of the USA's economy. If purchasing power parity was taken into account, ASEAN's economy in 2009 was around one-fifth that of the USA and more than two-third that of Japan.

01. ASEAN and the World

Table 3
Trends of per capita GDP in ASEAN and selected trading partner countries/regions

Country/Region	1998	2003	2007	2008	2009	Ratio 2009/1998
In US \$						
ASEAN	965	1,332	2,267	2,592	2,533	2.63
China	817	1,270	2,560	3,404	3,678	4.50
Japan	30,527	33,134	34,268	38,271	39,731	1.30
Republic of Korea	7,724	13,451	21,653	19,162	17,074	2.21
India	409	523	945	1,021	1,031	2.50
Australia	20,314	27,143	44,745	48,951	45,587	2.24
New Zealand	14,559	20,017	30,927	30,653	27,259	1.87
USA	31,858	38,324	46,630	47,393	46,381	1.46
EU27	19,081	23,549	34,325	37,068	33,052	1.73
In PPP International Dollar						
ASEAN	2,756	3,620	4,526	4,732	4,840	1.76
China	1,997	3,217	5,388	5,999	6,567	3.29
Japan	23,882	27,222	31,943	31,943	31,943	1.34
Republic of Korea	13,413	19,697	24,662	24,662	24,662	1.84
India	1,291	1,713	2,329	2,329	2,329	1.80
Australia	25,186	30,859	35,314	35,314	35,314	1.40
New Zealand	17,707	22,354	25,641	25,641	25,641	1.45
USA	31,858	38,324	44,823	44,823	44,823	1.41
EU27	21,869	26,346	32,012	32,701	31,600	1.44

Note: EU refers to EU27

Sources: ASEAN Finance and Macroeconomic Surveillance Database and IMF-World Economic Outlook April 2010

» Following a sharp decline in 1998 due to the Asian financial crisis, the average GDP per capita of ASEAN Member States had increased from US\$ 965 in 1998 to US\$ 2,533 in 2009

01. ASEAN and the World

Table 4
ASEAN GDP, rate of growth, and share of CLMV

Countries	1998	2000	2003	2007	2008	2009
GDP at current prices (US \$million)						
ASEAN	483,057	600,261	721,978	1,303,981	1,512,707	1,496,341
CLMV	38,029	46,291	58,051	102,860	129,732	137,228
ASEAN6	445,027	553,970	663,926	1,201,120	1,382,975	1,359,113
GDP share (%)						
ASEAN	100.0	100.0	100.0	100.0	100.0	100.0
CLMV	7.9	7.7	8.0	7.9	8.6	9.2
ASEAN6	92.1	92.3	92.0	92.1	91.4	90.8
Annual rate of growth of ASEAN GDP (%)						
Brunei Darussalam	-0.6	2.9	2.9	0.2	-1.9	-0.5
Cambodia	5.0	8.4	12.6	10.2	6.7	0.1
Indonesia	-13.1	5.4	4.8	6.3	6.0	4.5
Lao PDR	4.0	5.8	5.8	6.0	7.8	7.6
Malaysia	-7.4	8.9	5.8	6.6	4.7	1.7
Myanmar	5.8	13.7	5.1	5.6	3.6	4.8
Philippines	-0.6	4.4	3.7	7.4	3.4	1.1
Singapore	-2.1	9.1	4.6	8.5	1.8	-1.3
Thailand	-10.5	4.8	7.1	4.9	2.5	-2.2
Viet Nam	5.8	6.8	7.4	8.5	6.3	5.2
ASEAN	-7.4	6.2	5.5	6.6	4.4	1.5
CLMV	5.7	7.9	7.3	8.0	5.9	4.9
ASEAN6	-8.8	6.0	4.8	6.4	4.2	1.0

Notes: GDP growth is based on GDP at constant prices; ASEAN, ASEAN6 and CLMV figures are estimated weight average using the share of PPP\$ GDP to world total as used in the IMF WEO Database of April 2010

Sources:

ASEAN Finance and Macroeconomic Surveillance Database and IMF-World Economic Outlook April 2010

» In 2009 CLMV economies in general grew faster than ASEAN6 countries. Their collective share to ASEAN GDP increased from less than 6% in 1998 to above 9% in 2009.

» CLMV were less affected by the 1997 Asian financial crisis, managing to grow by 5.7% in 1998 when ASEAN6 contracted by 8.8%, and grew faster in 2009 by 4.9% as compares to 1.0%.

01. ASEAN and the World

Table 5
CPI and its selected components in ASEAN6, 2005-2009

Country	Food					Housing				
	2005	2006	2007	2008	2009	2005	2006	2007	2008	2009
Brunei										
Darussalam	101.3	101.6	103.8	109.0	111.5	98.7	97.6	96.8	97.0	97.7
Indonesia	131.6	139.9	148.9	167.6	174.1	141.5	148.3	155.6	172.6	175.7
Malaysia	94.4	94.4	94.4	94.4	94.4	100.0	101.5	102.8	104.4	105.9
Philippines	124.3	131.0	135.4	152.3	161.2	127.2	132.3	134.0	139.6	143.6
Singapore	86.8	88.1	90.7	97.7	100.0	84.1	86.4	86.7	98.3	100.0
Thailand	91.9	96.1	100.0	111.6	116.5	97.9	99.9	100.0	96.9	95.2

Country	Transport					Total				
	2005	2006	2007	2008	2009	2005	2006	2007	2008	2009
Brunei										
Darussalam	108.1	106.7	107.2	108.9	111.2	102.4	102.5	102.8	105.6	107.5
Indonesia	165.4	167.1	169.2	181.8	175.1	125.1	141.5	150.5	167.2	171.8
Malaysia	100.0	111.0	113.6	123.6	112.0	100.0	103.6	105.7	111.5	112.1
Philippines	149.6	162.4	167.0	180.5	180.1	129.8	137.9	141.8	155.0	160.0
Singapore	98.3	96.7	99.1	103.2	100.0	90.4	91.3	93.2	99.4	100.0
Thailand	89.8	97.9	100.0	106.2	95.6	93.4	97.8	100.0	105.4	104.5

Source: ASEAN Finance and Macroeconomic Surveillance Database

Notes: Thailand and Indonesia were applying new base year, 2007=100 and Singapore was using 2009 as new base year

01. ASEAN and the World

Table 6
Inflation rate (year-on-year change of the Consumer Price Index), end period (in percent)

Country	1998	2000	2003	2005	2007	2008	2009
Brunei Darussalam	-0.7	1.6	2.0	0.7	1.0	2.6	1.9
Cambodia	11.1	0.3	0.5	6.7	1.0	12.5	5.3
Indonesia	77.5	9.3	5.2	17.1	6.6	11.9	2.8
Lao PDR	142.4	10.6	15.2	8.8	5.0	8.5	-
Malaysia	5.4	2.1	1.2	3.5	2.4	4.4	1.1
Myanmar	-	-	-	-	-	-	-
Philippines	10.0	6.5	3.9	6.7	3.9	8.0	4.4
Singapore	-1.4	2.1	0.7	1.3	4.4	4.9	-0.6
Thailand	4.3	1.5	1.7	5.8	3.2	0.4	3.5
Viet Nam	8.6	-0.6	2.9	8.9	12.6	19.9	6.9

Source: ASEAN Finance and Macroeconomic Surveillance Database

01. ASEAN and the World

Table 7
Lending rates in ASEAN (in percent)

Country	1998	2000	2003	2007	2008	2009
Brunei Darussalam	6.3	5.5	5.5	5.5	7.5	-
Cambodia	19.6	17.4	21.1	22.3	22.4	23.1
Indonesia	34.8	17.7	15.1	13.0	15.2	13.7
Lao PDR	18.5	15.5	20.0	24.0	18.9	14.4
Malaysia	9.7	7.2	6.1	6.7	6.5	5.5
Myanmar	16.5	15.0	15.0	17.0	-	-
Philippines	14.4	12.0	9.6	9.0	8.3	7.1
Singapore	5.9	5.8	5.3	5.3	5.4	5.4
Thailand	11.50-12.00	7.50-8.25	5.50-5.75	6.85-7.13	6.75-7.00	5.85-6.25
Viet Nam	10.2	10.4	8.4	11.5	12.0	11.9

Notes: 2008 figure for Brunei Darussalam is up to Q2 only; 2008 and 2009 figures for Myanmar are not available

Source: ASEAN Finance and Macroeconomic Surveillance Database

01. ASEAN and the World

Table 8

Exchange rates in ASEAN (in national currency per US\$ 1), average of period

Country	1998	2000	2003	2007	2008	2009
Brunei Darussalam	1.7	1.7	1.7	1.5	1.4	1.5
Cambodia	3,836	3,894	4,001	4,080	4,079	4,159
Indonesia	10,014	8,422	8,575	9,164	9,691	10,356
Lao PDR	3,298	7,888	10,554	9,567	8,744	8,526
Malaysia	3.9	3.8	3.8	3.4	3.3	3.5
Myanmar	249	287	737	1,156	1,021	1,168
Philippines	40.9	44.2	54.2	45.7	44.5	47.6
Singapore	1.7	1.7	1.7	1.5	1.4	1.4
Thailand	41.3	40.1	41.5	34.5	33.3	34.3
Viet Nam	13,268	14,168	15,509	16,121	16,303	17,067

Note: Myanmar US\$ - Kyat exchange rate is based on the parallel rate as used in IMF-WEO April 2010

Source: ASEAN Finance and Macroeconomic Surveillance Database

02. ASEAN trade aggregates

Table 9
Share of international trade to overall ASEAN economy

Indicator	Unit/Scale	1998	2000	2003	2007	2008	2009
Total Trade	Value (US\$ million)	576,108	759,101	824,539	1,610,787	1,897,127	1,536,843
	Growth (%)	-17.5	21.8	15.5	14.7	17.8	-19.0
Intra-ASEAN Trade	Value (US\$ million)	120,918	166,846	206,732	401,920	4 70,112	376,207
	Growth (%)	-19.4	25.8	29.3	13.9	17.0	-20.0
	Share to total trade (%)	21.0	22.0	25.1	25.0	24.8	24.5
Extra-ASEAN Trade	Value (US\$ million)	455,190	592,255	6 17,807	1,208,867	1,427,015	1,160,636
	Growth (%)	-17.0	20.7	11.5	14.9	18.0	-18.7
	Share to total trade (%)	79.0	78.0	74.9	75.0	75.2	75.5
Ratio to GDP	Share of trade to GDP (%)	119.3	126.5	114.2	123.5	125.4	102.7
	Exports to GDP (%)	65.6	68.3	62.7	65.9	64.6	54.2
	Imports to GDP (%)	53.7	58.1	51.5	57.6	60.8	48.5
Trade Balance	Value (US\$ million)	57,194	61,180	80,575	108,820	57,946	84,135
	Share to exports (%)	18.1	14.9	17.8	12.7	5.9	10.4

Source: ASEAN Trade Statistics Database as of September 2010

» ASEAN trade reached US\$1.5 trillion in 2009, with intra-ASEAN trade amounting to US\$ 376 billion.

» Total ASEAN trade decreased by -19%, with intra-ASEAN trade maintaining a constant share of around 25% until 2009 when it reaches 24.5% due to decline in the extra-ASEAN Trade.

» Since 2007 trade as percentage of GDP decreased in line with the slower growth of both export and import than the growth of the nominal GDP.

» ASEAN has been on trade surplus since 1998. Trade balance recorded at US\$ 109 billion in 2007, but declined to US\$ 84 billion in 2009.

02. ASEAN trade aggregates

Table 10

ASEAN Balance of trade with selected trading partner countries

Country	Unit/Scale	1998	2000	2003	2007	2008	2009
Japan	Value (US\$ million)	-11,977	-15,071	-7,005	-2,786	-2,626	-4,727
	Share to exports (%)	-34.5	-29.8	-13.2	-3.3	-2.5	-6.1
USA	Value (US\$ million)	13,678	25,322	21,463	33,684	20,091	14,831
	Share to exports (%)	21.2	34.3	30.8	31.7	19.5	18.0
EU27	Value (US\$ million)	14,211	24,176	18,940	29,349	24,093	14,196
	Share to exports (%)	29.0	38.1	31.4	27.1	20.7	15.3
China	Value (US\$ million)	-2,009	-3,958	-1,517	-15,228	-21,694	-15,003
	Share to exports (%)	-21.8	-27.9	-5.2	-19.5	-24.8	-18.4
Republic of Korea	Value (US\$ million)	-1,454	-727	335	-2,211	-5,145	-6,155
	Share to exports (%)	-18.6	-5.0	2.0	-7.5	-14.1	-17.9
Australia	Value (US\$ million)	1,418	198	4,727	12,904	16,256	14,229
	Share to exports (%)	19.9	2.2	39.5	47.0	47.2	49.0
India	Value (US\$ million)	3,467	3,237	4,393	12,445	12,990	13,925
	Share to exports (%)	66.5	50.2	52.0	50.1	42.0	52.5
Canada	Value (US\$ million)	548	581	890	1,051	349	1,961
	Share to exports (%)	23.7	21.5	32.4	19.9	6.3	35.7
New Zealand	Value (US\$ million)	-106	179	320	1,308	1,220	899
	Share to exports (%)	-14.0	14.7	21.7	36.8	26.9	28.7
Russia	Value (US\$ million)	-90	-722	-588	-1,245	-4,322	-3,444
	Share to exports (%)	-19.1	-220.8	-65.0	-60.0	-158.0	-207.4
Pakistan	Value (US\$ million)	1,055	2,907	1,421	3,441	4,002	3,364
	Share to exports (%)	81.9	90.8	85.5	91.0	89.7	87.8

Source: ASEAN Trade Statistics Database as of September 2010

» ASEAN trade with China has always been in deficit since the last 10 years, and mostly in deficit with Japan, ROK and Russia.

» On the other hand, ASEAN has maintained trade surplus with the USA, EU27, Australia, New Zealand, India, Canada and Pakistan since 1998.

02. ASEAN trade aggregates

Table 11
Trade by ASEAN Member States

Country	1998	2000	2003	2007	2008	2009
Total Trade (US\$ million)	576,108	759,101	824,539	1,610,787	1,897,127	1,536,843
Brunei Darussalam	3,200	3,237	4,563	9,750	12,775	9,568
Cambodia	-	2,772	5,022	7,581	8,776	8,887
Indonesia	76,185	95,639	93,609	188,574	266,218	213,339
Lao PDR	-	-	482	1,093	2,631	2,962
Malaysia	138,075	177,802	188,502	323,116	338,795	280,221
Myanmar	-	3,413	6,307	8,723	10,415	10,191
Philippines	59,156	72,569	73,728	105,979	105,671	83,869
Singapore	211,299	273,033	296,116	562,452	657,956	515,617
Thailand	88,193	130,636	156,210	293,537	352,534	286,267
Viet Nam	-	-	-	109,982	141,357	125,922
Share of total trade to GDP (%)						
Brunei Darussalam	79.8	54.0	69.8	79.4	88.4	88.9
Cambodia	-	76.6	108.4	87.8	79.2	85.8
Indonesia	72.2	57.8	39.8	43.8	51.9	39.0
Lao PDR	-	-	22.6	26.5	49.8	53.1
Malaysia	191.1	196.9	181.3	172.7	152.1	145.1
Myanmar	-	35.5	53.7	45.6	45.6	40.8
Philippines	90.2	97.0	92.6	72.2	63.5	52.0
Singapore	248.5	289.5	308.6	318.2	340.0	282.2
Thailand	78.2	106.2	109.3	118.8	129.2	108.3
Viet Nam	-	-	-	155.0	156.2	130.7

Source: ASEAN Trade Statistics Database as of September 2010

02. ASEAN trade aggregates

Table 12
Export and Import by ASEAN Member States

Country	1998	2000	2003	2007	2008	2009
Export (US\$ million)	316,651	410,141	452,557	859,804	977,537	810,489
Brunei Darussalam	1,924	2,169	3,211	7,653	10,268	7,169
Cambodia	-	1,368	2,116	3,906	4,359	4,986
Indonesia	48,848	62,124	61,058	114,101	137,020	116,510
Lao PDR	-	-	144	382	828	1,237
Malaysia	77,099	98,154	104,983	176,206	194,496	156,891
Myanmar	-	1,194	4,464	5,933	6,621	6,341
Philippines	29,496	38,078	36,231	50,466	49,025	38,335
Singapore	109,803	138,352	159,900	299,297	338,176	269,832
Thailand	49,482	68,701	80,450	153,571	174,967	152,497
Viet Nam	-	-	-	48,289	61,778	56,691
Import (US \$million)	259,457	348,960	371,982	750,984	919,591	726,354
Brunei Darussalam	1,276	1,068	1,352	2,097	2,507	2,400
Cambodia	-	1,405	2,906	3,675	4,417	3,901
Indonesia	27,337	33,515	32,551	74,473	129,197	96,829
Lao PDR	-	-	338	711	1,803	1,725
Malaysia	60,976	79,647	83,519	146,910	144,299	123,330
Myanmar	-	2,219	1,843	2,789	3,795	3,850
Philippines	29,660	34,491	37,497	55,514	56,646	45,534
Singapore	101,496	134,680	136,216	263,155	319,780	245,785
Thailand	38,712	61,935	75,759	139,966	177,568	133,770
Viet Nam	-	-	-	61,694	79,579	69,231

Source: ASEAN Trade Statistics Database as of September 2010

02. ASEAN trade aggregates

Table 13
Trade Balance by ASEAN Member States

Country	1998	2000	2003	2007	2008	2009
Trend of trade balance (US\$ million)						
Brunei Darussalam	647	1,102	1,859	5,557	7,761	4,769
Cambodia	-	-37	-791	230	-58	1,085
Indonesia	21,511	28,609	28,508	39,627	7,823	19,681
Lao PDR	-	-	-194	-329	-976	-488
Malaysia	16,122	18,507	21,464	29,295	50,197	33,560
Myanmar	-	-1,026	2,621	3,144	2,826	2,492
Philippines	-164	3,587	-1,265	-5,048	-7,620	-7,199
Singapore	8,307	3,672	23,684	36,143	18,396	24,048
Thailand	10,770	6,766	4,691	13,605	-2,601	18,728
Viet Nam	-	-	-	-13,405	-17,801	-12,540
Trend of trade balance as percentage of exports						
Brunei Darussalam	33.7	50.8	57.9	72.6	75.6	66.5
Cambodia	-	-2.7	-37.4	5.9	-1.3	21.8
Indonesia	44.0	46.1	46.7	34.7	5.7	16.9
Lao PDR	-	-	-134.9	-86.2	-117.9	-39.4
Malaysia	20.9	18.9	20.4	16.6	25.8	21.4
Myanmar	-	-85.9	58.7	53.0	42.7	39.3
Philippines	-0.6	9.4	-3.5	-10.0	-15.5	-18.8
Singapore	7.6	2.7	14.8	12.1	5.4	8.9
Thailand	21.8	9.8	5.8	8.9	-1.5	12.3
Viet Nam	-	-	-	-27.8	-28.8	-22.1

Source: ASEAN Trade Statistics Database as of September 2010

03. ASEAN trade dependency

Table 14
Trade value by selected trade partner countries, ranked according to the 2009 levels (US\$ million)

Country	1998	2000	2003	2007	2008	2009
ASEAN	120,918	166,846	206,732	401,920	470,112	376,207
China	20,414	32,316	59,637	171,118	196,884	178,185
EU27	83,640	102,767	101,683	187,572	208,291	171,786
Japan	81,410	116,191	113,401	173,062	214,400	160,864
USA	115,562	122,218	117,886	179,068	186,243	149,572
Republic of Korea	17,080	29,635	33,548	61,184	78,251	74,740
Australia	12,822	17,589	19,197	41,963	52,593	43,850
India	6,968	9,656	12,512	37,235	48,803	39,116
Canada	4,081	4,833	4,612	9,499	10,737	9,040
Russia	1,035	1,375	2,397	5,398	9,794	6,765
New Zealand	1,621	2,248	2,621	5,795	7,837	5,376
Pakistan	1,521	3,493	1,902	4,125	4,922	4,303
Rest of the World	109,033	149,934	148,411	332,848	408,260	317,038
Total	576,108	759,101	824,539	1,610,787	1,897,127	1,536,843

Source: ASEAN Trade Statistics Database as of September 2010

» ASEAN Member States have traded substantially with each other, and with China, EU27, Japan and USA. Intra-ASEAN trade had expanded to US\$ 470 billion in 2008 from only 121 billion in 1998; but it slightly decreased to US\$ 376 billion in 2009.

» ASEAN trade with USA, Japan, EU27, and China ranged from US\$ 150 to US\$ 178 billion in 2009.

» ASEAN trade with China was only US\$ 20 billion in 1998 but had increased more than nine-fold since then, reaching US\$ 178 billion in 2009.

03. ASEAN trade dependency

Table 15
ASEAN Trade with selected partner countries, ranked according to the 2009 shares (in percent)

Country	1998	2000	2003	2007	2008	2009
ASEAN	21.0	22.0	25.1	25.0	24.8	24.5
China	3.5	4.3	7.2	10.6	10.4	11.6
EU27	14.5	13.5	12.3	11.6	11.0	11.2
Japan	14.1	15.3	13.8	10.7	11.3	10.5
USA	20.1	16.1	14.3	11.1	9.8	9.7
Republic of Korea	3.0	3.9	4.1	3.8	4.1	4.9
Australia	2.2	2.3	2.3	2.6	2.8	2.9
India	1.2	1.3	1.5	2.3	2.6	2.5
Canada	0.7	0.6	0.6	0.6	0.6	0.6
Russia	0.2	0.2	0.3	0.3	0.5	0.4
New Zealand	0.3	0.3	0.3	0.4	0.4	0.3
Pakistan	0.3	0.5	0.2	0.3	0.3	0.3
Rest of the World	18.9	19.8	18.0	20.7	21.5	20.6
Total	100.0	100.0	100.0	100.0	100.0	100.0

Source: ASEAN Trade Statistics Database as of September 2010

- » The share of intra-ASEAN trade had increased from 21.0% in 1998 to 24.5% in 2009.
- » Japan, EU27, and China were ASEAN's top three trading partners in 2009, each contributing around 11%-12% to ASEAN's total trade.
- » While the share of USA, EU27, and Japan had declined from 1998, the share of China's trade with ASEAN had increased from only 3.5% in 1998 to 11.6% in 2009.

03. ASEAN trade dependency

Table 16
ASEAN Member States Export to ASEAN+3, 2009

Country	ASEAN	China	Japan	Republic of Korea	ASEAN+3
In billion US\$					
Brunei Darussalam	1.2	0.3	3.3	0.8	5.7
Cambodia	0.6	0.0	0.1	0.0	0.8
Indonesia	24.6	11.5	18.6	8.1	62.8
Lao PDR	1.0	0.0	0.0	0.0	1.0
Malaysia	40.4	19.1	15.4	6.0	80.8
Myanmar	3.2	0.5	0.2	0.1	3.9
Philippines	5.8	2.9	6.2	1.8	16.8
Singapore	81.6	26.3	12.3	12.6	132.8
Thailand	32.5	16.1	15.7	2.8	67.2
Viet Nam	8.6	4.9	6.3	2.0	21.8
ASEAN	199.6	81.6	78.1	34.3	393.5
Country	ASEAN	China	Japan	Republic of Korea	ASEAN+3
Share (%)					
Brunei Darussalam	0.62	0.36	4.23	2.42	1.44
Cambodia	0.32	0.02	0.10	0.03	0.19
Indonesia	12.34	14.09	23.79	23.75	15.97
Lao PDR	0.50	0.00	0.01	0.00	0.26
Malaysia	20.22	23.37	19.77	17.45	20.54
Myanmar	1.60	0.58	0.21	0.18	0.99
Philippines	2.93	3.59	7.94	5.33	4.27
Singapore	40.91	32.24	15.73	36.65	33.75
Thailand	16.28	19.76	20.15	8.22	17.07
Viet Nam	4.29	5.99	8.06	5.98	5.53
ASEAN	100.0	100.0	100.0	100.0	100.0

Source: ASEAN Trade Statistics Database as of September 2010

03. ASEAN trade dependency

Table 17
ASEAN Member States Import from ASEAN+3, 2009

Country	ASEAN	China	Japan	Republic of Korea	ASEAN+3
In billion US\$					
Brunei Darussalam	1.2	0.1	0.2	0.1	1.6
Cambodia	1.5	0.9	0.1	0.2	2.7
Indonesia	27.7	14.0	9.8	4.7	56.3
Lao PDR	1.5	0.1	0.1	0.0	1.7
Malaysia	31.7	17.2	15.4	5.7	70.0
Myanmar	2.1	0.8	0.3	0.2	3.3
Philippines	11.6	4.0	5.7	3.1	24.4
Singapore	59.0	25.9	18.7	14.0	117.7
Thailand	26.8	17.0	25.0	5.4	74.2
Viet Nam	13.6	16.5	7.4	6.9	44.4
ASEAN	176.6	96.6	82.8	40.4	396.5
Country	ASEAN	China	Japan	Republic of Korea	ASEAN+3
Share (%)					
Brunei Darussalam	0.70	0.15	0.26	0.13	0.42
Cambodia	0.82	0.91	0.14	0.52	0.67
Indonesia	15.71	14.50	11.89	11.72	14.21
Lao PDR	0.84	0.10	0.08	0.12	0.43
Malaysia	17.95	17.81	18.59	14.11	17.66
Myanmar	1.17	0.81	0.31	0.51	0.84
Philippines	6.55	4.18	6.89	7.77	6.17
Singapore	33.43	26.84	22.62	34.69	29.70
Thailand	15.15	17.63	30.22	13.41	18.72
Viet Nam	7.68	17.08	8.99	17.04	11.20
ASEAN	100.0	100.0	100.0	100.0	100.0

Source: ASEAN Trade Statistics Database as of September 2010

03. ASEAN trade dependency

Table 18
ASEAN Member States Trade with ASEAN+3, 2009

Country	ASEAN	China	Japan	Republic of Korea	ASEAN+3
In billion US\$					
Brunei Darussalam	2.5	0.4	3.5	0.9	7.3
Cambodia	2.1	0.9	0.2	0.2	3.4
Indonesia	52.4	25.5	28.4	12.9	119.2
Lao PDR	2.5	0.1	0.1	0.0	2.7
Malaysia	72.1	36.3	30.8	11.7	150.8
Myanmar	5.3	1.3	0.4	0.3	7.2
Philippines	17.4	7.0	11.9	5.0	41.2
Singapore	140.7	52.2	31.0	26.6	250.5
Thailand	59.3	33.2	40.8	8.2	141.4
Viet Nam	22.1	21.4	13.7	8.9	66.2
ASEAN	376.2	178.2	160.9	74.7	790.0
Country	ASEAN	China	Japan	Republic of Korea	ASEAN+3
Share (%)					
Brunei Darussalam	0.66	0.24	2.19	1.18	0.92
Cambodia	0.56	0.50	0.12	0.29	0.43
Indonesia	13.92	14.31	17.67	17.24	15.09
Lao PDR	0.66	0.06	0.05	0.06	0.34
Malaysia	19.16	20.35	19.16	15.64	19.09
Myanmar	1.40	0.70	0.26	0.36	0.91
Philippines	4.62	3.91	7.40	6.65	5.22
Singapore	37.40	29.31	19.28	35.59	31.71
Thailand	15.75	18.61	25.34	11.03	17.90
Viet Nam	5.88	12.00	8.54	11.96	8.38
ASEAN	100.0	100.0	100.0	100.0	100.0

Source: ASEAN Trade Statistics Database as of September 2010

03. ASEAN trade dependency

Table 19
ASEAN Member States Export to Other Selected Trade Partner Countries,
2009

Country	Australia	Canada	EU-27	India	New Zealand	Pakistan	Russia	USA
In billion US\$								
Brunei Darussalam	0.52	0.00	0.01	0.61	0.31	0.00	0.00	0.04
Cambodia	0.02	0.20	0.71	0.00	0.00	0.00	0.01	1.55
Indonesia	3.26	0.51	13.64	7.43	0.35	0.67	0.32	10.89
Lao PDR	0.11	0.00	0.08	0.00	0.00	0.00	0.00	0.02
Malaysia	5.67	0.78	17.00	4.82	0.54	1.63	0.53	17.18
Myanmar	0.01	0.00	0.08	0.96	0.00	0.02	0.00	0.00
Philippines	0.30	0.24	7.88	0.20	0.03	0.04	0.04	6.75
Singapore	10.57	2.46	26.01	9.26	1.36	0.80	0.36	17.71
Thailand	8.58	1.31	18.21	3.22	0.54	0.68	0.41	16.68
Viet Nam	0.00	0.00	9.37	0.00	0.00	0.00	0.00	11.37
ASEAN	29.04	5.50	92.99	26.52	3.14	3.83	1.66	82.20
Country	Australia	Canada	EU-27	India	New Zealand	Pakistan	Russia	USA
Share (%)								
Brunei Darussalam	1.80	0.02	0.01	2.31	10.03	0.00	0.00	0.05
Cambodia	0.06	3.56	0.77	0.02	0.05	0.01	0.57	1.89
Indonesia	11.24	9.32	14.67	28.03	11.14	17.35	19.04	13.25
Lao PDR	0.37	0.03	0.08	0.00	0.00	0.00	0.00	0.03
Malaysia	19.53	14.20	18.29	18.17	17.19	42.51	32.02	20.90
Myanmar	0.05	0.00	0.08	3.63	0.01	0.45	0.13	0.00
Philippines	1.02	4.33	8.48	0.76	0.89	1.04	2.35	8.21
Singapore	36.39	44.70	27.97	34.93	43.42	20.87	21.45	21.54
Thailand	29.54	23.85	19.58	12.15	17.27	17.77	24.43	20.30
Viet Nam	0.00	0.00	10.07	0.00	0.00	0.00	0.00	13.83
ASEAN	100.0	100.0	100.0	100.0	100.0	100.0	100.0	100.0

Source: ASEAN Trade Statistics Database as of September 2010

03. ASEAN trade dependency

Table 20
ASEAN Member States Import from Other Selected Trade Partner Countries, 2009

Country	Australia	Canada	EU-27	India	New Zealand	Pakistan	Russia	USA
In billion US\$								
Brunei Darussalam	0.04	0.01	0.25	0.03	0.01	0.00	0.00	0.31
Cambodia	0.03	0.00	0.12	0.04	0.00	0.02	0.03	0.09
Indonesia	3.44	0.99	8.68	2.21	0.56	0.08	0.46	7.09
Lao PDR	0.00	0.00	0.01	0.00	0.00	0.00	0.00	0.00
Malaysia	2.69	0.64	14.39	2.23	0.47	0.15	0.26	13.79
Myanmar	0.05	0.00	0.08	0.20	0.00	0.01	0.00	0.03
Philippines	0.78	0.25	3.47	0.53	0.31	0.05	0.26	5.44
Singapore	4.00	0.97	33.99	5.63	0.57	0.05	2.40	29.22
Thailand	3.79	0.67	12.13	1.73	0.31	0.11	1.69	8.44
Viet Nam	0.00	0.00	5.66	0.00	0.00	0.00	0.00	2.96
ASEAN	14.81	3.54	78.79	12.60	2.24	0.47	5.10	67.37
Country	Australia	Canada	EU-27	India	New Zealand	Pakistan	Russia	USA
Share (%)								
Brunei Darussalam	0.25	0.20	0.31	0.21	0.43	0.09	0.00	0.46
Cambodia	0.19	0.08	0.15	0.28	0.09	4.37	0.55	0.13
Indonesia	23.20	28.04	11.02	17.54	24.87	16.27	8.99	10.53
Lao PDR	0.02	0.01	0.02	0.03	0.00	0.01	0.06	0.01
Malaysia	18.16	18.22	18.27	17.72	20.83	31.77	5.12	20.47
Myanmar	0.32	0.03	0.11	1.63	0.12	1.08	0.01	0.04
Philippines	5.26	7.09	4.40	4.21	14.07	10.86	5.12	8.08
Singapore	27.03	27.31	43.14	44.67	25.68	11.41	47.02	43.37
Thailand	25.57	19.02	15.40	13.72	13.90	24.15	33.14	12.52
Viet Nam	0.00	0.00	7.19	0.00	0.00	0.00	0.00	4.39
ASEAN	100.0	100.0	100.0	100.0	100.0	100.0	100.0	100.0

Source: ASEAN Trade Statistics Database as of September 2010

03. ASEAN trade dependency

Table 21
ASEAN Member States Trade with Other Selected Trade Partner Countries, 2009

Country	Australia	Canada	EU-27	India	New Zealand	Pakistan	Russia	USA
In billion US\$								
Brunei Darussalam	0.56	0.01	0.26	0.64	0.32	0.00	0.00	0.36
Cambodia	0.05	0.20	0.83	0.04	0.00	0.02	0.04	1.64
Indonesia	6.70	1.50	22.32	9.64	0.91	0.74	0.77	17.98
Lao PDR	0.11	0.00	0.09	0.00	0.00	0.00	0.00	0.02
Malaysia	8.36	1.43	31.40	7.05	1.01	1.78	0.79	30.97
Myanmar	0.06	0.00	0.16	1.17	0.00	0.02	0.00	0.03
Philippines	1.07	0.49	11.35	0.73	0.34	0.09	0.30	12.19
Singapore	14.57	3.42	60.00	14.89	1.94	0.85	2.76	46.92
Thailand	12.37	1.98	30.34	4.95	0.85	0.79	2.10	25.12
Viet Nam	0.00	0.00	15.03	0.00	0.00	0.00	0.00	14.33
ASEAN	43.85	9.04	171.79	39.12	5.38	4.30	6.77	149.57
Country	Australia	Canada	EU-27	India	New Zealand	Pakistan	Russia	USA
Share (%)								
Brunei Darussalam	1.28	0.09	0.15	1.64	6.03	0.01	0.00	0.24
Cambodia	0.11	2.20	0.48	0.10	0.07	0.49	0.55	1.10
Indonesia	15.28	16.65	12.99	24.65	16.86	17.23	11.45	12.02
Lao PDR	0.25	0.02	0.05	0.01	0.00	0.00	0.05	0.02
Malaysia	19.07	15.77	18.28	18.03	18.71	41.34	11.72	20.71
Myanmar	0.14	0.01	0.09	2.98	0.06	0.52	0.04	0.02
Philippines	2.45	5.41	6.61	1.87	6.38	2.11	4.44	8.15
Singapore	33.23	37.89	34.93	38.07	36.03	19.84	40.74	31.37
Thailand	28.20	21.96	17.66	12.65	15.86	18.46	31.01	16.80
Viet Nam	0.00	0.00	8.75	0.00	0.00	0.00	0.00	9.58
ASEAN	100.0	100.0	100.0	100.0	100.0	100.0	100.0	100.0

Source: ASEAN Trade Statistics Database as of September 2010

03. ASEAN trade dependency

Table 22
Share of ASEAN Member States Export by Selected Trade Partner,
2009, (in percent)

Country	ASEAN	China	Japan	Rep. of Korea	Australia	Canada	EU-27
Brunei Darussalam	17.15	4.04	46.11	11.56	7.30	0.01	0.16
Cambodia	12.93	0.33	1.60	0.19	0.35	3.93	14.30
Indonesia	21.13	9.87	15.94	6.99	2.80	0.44	11.71
Lao PDR	80.62	0.23	0.75	0.05	8.71	0.12	6.17
Malaysia	25.73	12.15	9.84	3.81	3.61	0.50	10.84
Myanmar	50.41	7.49	2.63	0.97	0.22	0.00	1.23
Philippines	15.23	7.64	16.16	4.76	0.77	0.62	20.56
Singapore	30.26	9.75	4.55	4.66	3.92	0.91	9.64
Thailand	21.31	10.57	10.32	1.85	5.63	0.86	11.94
Viet Nam	15.09	8.62	11.10	3.62	0.00	0.00	16.52
ASEAN	24.63	10.07	9.63	4.23	3.58	0.68	11.47
Country	India	New Zealand	Pakistan	Russia	USA	Rest of the World	Total
Brunei Darussalam	8.56	4.39	0.00	0.00	0.62	0.09	100.0
Cambodia	0.10	0.03	0.01	0.19	31.15	34.90	100.0
Indonesia	6.38	0.30	0.57	0.27	9.35	14.24	100.0
Lao PDR	0.00	0.01	0.00	0.00	1.70	1.63	100.0
Malaysia	3.07	0.34	1.04	0.34	10.95	17.78	100.0
Myanmar	15.17	0.01	0.27	0.03	0.00	21.57	100.0
Philippines	0.52	0.07	0.10	0.10	17.60	15.85	100.0
Singapore	3.43	0.50	0.30	0.13	6.56	25.39	100.0
Thailand	2.11	0.36	0.45	0.27	10.94	23.41	100.0
Viet Nam	0.00	0.00	0.00	0.00	20.06	25.00	100.0
ASEAN	3.27	0.39	0.47	0.20	10.14	21.23	100.0

Source: ASEAN Trade Statistics Database as of September 2010

03. ASEAN trade dependency

Table 23
Share of ASEAN Member States Import by Selected Trade Partner, 2009,
(in percent)

Country	ASEAN	China	Japan	Rep. of Korea	Australia	Canada	EU-27
Brunei Darussalam	51.79	5.84	8.94	2.12	1.52	0.29	10.27
Cambodia	37.26	22.59	3.05	5.36	0.74	0.07	3.01
Indonesia	28.65	14.46	10.17	4.90	3.55	1.03	8.97
Lao PDR	85.84	5.59	3.80	2.73	0.13	0.01	0.81
Malaysia	25.70	13.95	12.48	4.63	2.18	0.52	11.67
Myanmar	53.66	20.30	6.74	5.34	1.23	0.03	2.17
Philippines	25.39	8.86	12.53	6.90	1.71	0.55	7.62
Singapore	24.02	10.55	7.62	5.71	1.63	0.39	13.83
Thailand	20.00	12.73	18.71	4.05	2.83	0.50	9.07
Viet Nam	19.60	23.83	10.75	9.95	0.00	0.00	8.18
ASEAN	24.32	13.30	11.40	5.57	2.04	0.49	10.85
Country	India	New Zealand	Pakistan	Russia	USA	Rest of the World	Total
Brunei Darussalam	1.12	0.40	0.02	0.00	13.00	4.68	100.0
Cambodia	0.91	0.05	0.53	0.71	2.32	23.40	100.0
Indonesia	2.28	0.58	0.08	0.47	7.33	17.55	100.0
Lao PDR	0.21	0.00	0.00	0.19	0.20	0.48	100.0
Malaysia	1.81	0.38	0.12	0.21	11.18	15.16	100.0
Myanmar	5.32	0.07	0.13	0.01	0.67	4.33	100.0
Philippines	1.16	0.69	0.11	0.57	11.95	21.95	100.0
Singapore	2.29	0.23	0.02	0.98	11.89	20.84	100.0
Thailand	1.29	0.23	0.08	1.26	6.31	22.92	100.0
Viet Nam	0.00	0.00	0.00	0.00	4.27	23.41	100.0
ASEAN	1.73	0.31	0.06	0.70	9.28	19.96	100.0

Source: ASEAN Trade Statistics Database as of September 2010

03. ASEAN trade dependency

Table 24
Share of ASEAN Member States Trade by Selected Trade Partner,
2009, (in percent)

Country	ASEAN	China	Japan	Rep. of Korea	Australia	Canada	EU-27
Brunei Darussalam	25.84	4.49	36.78	9.19	5.85	0.08	2.70
Cambodia	23.61	10.10	2.23	2.46	0.52	2.24	9.34
Indonesia	24.55	11.95	13.32	6.04	3.14	0.71	10.46
Lao PDR	83.66	3.35	2.53	1.61	3.72	0.06	3.05
Malaysia	25.72	12.94	11.00	4.17	2.98	0.51	11.20
Myanmar	51.64	12.33	4.18	2.62	0.60	0.01	1.59
Philippines	20.75	8.30	14.19	5.92	1.28	0.58	13.53
Singapore	27.29	10.13	6.01	5.16	2.83	0.66	11.64
Thailand	20.70	11.58	14.24	2.88	4.32	0.69	10.60
Viet Nam	17.57	16.98	10.91	7.10	0.00	0.00	11.94
ASEAN	24.48	11.59	10.47	4.86	2.85	0.59	11.18
Country	India	New Zealand	Pakistan	Russia	USA	ROW	Total
Brunei Darussalam	6.69	3.39	0.00	0.00	3.73	1.24	100.0
Cambodia	0.45	0.04	0.24	0.42	18.50	29.85	100.0
Indonesia	4.52	0.42	0.35	0.36	8.43	15.74	100.0
Lao PDR	0.12	0.01	0.00	0.11	0.82	0.96	100.0
Malaysia	2.52	0.36	0.63	0.28	11.05	16.63	100.0
Myanmar	11.45	0.03	0.22	0.02	0.25	15.06	100.0
Philippines	0.87	0.41	0.11	0.36	14.53	19.16	100.0
Singapore	2.89	0.38	0.17	0.53	9.10	23.22	100.0
Thailand	1.73	0.30	0.28	0.73	8.78	23.18	100.0
Viet Nam	0.00	0.00	0.00	0.00	11.38	24.13	100.0
ASEAN	2.55	0.35	0.28	0.44	9.73	20.63	100.0

Source: ASEAN Trade Statistics Database as of September 2010

03. ASEAN trade dependency

Table 25
Top 20 ASEAN exported commodities (based on 4-digit Harmonised System codes), 2009

HS Codes	Commodities	Value	Share (%)
8542	Electronic integrated circuits and microassemblies	88,182	10.9
2710	Petroleum oils, not crude	53,365	6.6
8471	Automatic data processing machines; optical reader, etc	32,423	4.0
8473	Parts & accessories of computers & office machines	23,943	3.0
2711	Petroleum gases	21,800	2.7
1511	Palm oil & its fraction	19,904	2.5
2709	Crude petroleum oils	19,603	2.4
2701	Coal; briquettes, ovoids & similar solid fuels manufactured from coal	14,790	1.8
8541	Diodes/transistors & sim semiconductor devices; etc	13,842	1.7
8443	Printing machinery; machines for uses ancillary to printing	13,022	1.6
7108	Gold unwrought or in semi-manufactured forms	9,918	1.2
4001	Natural rubber, balata, gutta-percha etc	9,693	1.2
8517	Electric apparatus for line telephony, including current line system	9,093	1.1
8708	Parts & access of motor vehicles	8,130	1.0
1006	Rice	6,622	0.8
8431	Machinery part (hs 84.25 to 84.30)	6,103	0.8
8803	Aircraft parts	5,912	0.7
7113	Articles of jewellery & parts thereof	5,657	0.7
2603	Copper ores and concentrates	5,628	0.7
8528	Television receivers (including video monitors & video projectors)	5,462	0.7
	Top 20 commodities	373,091	46.0
	Others	437,398	54.0
	Total	810,489	100.0

Source: ASEAN Trade Statistics Database as of September 2010

03. ASEAN trade dependency

Table 26
Top 20 ASEAN imported commodities (based on 4-digit Harmonised System codes), 2009

HS Codes	Commodities	Value	Share (%)
	Electronic integrated circuits and microassemblies	72,202	9.9
2710	Petroleum oils, not crude	64,501	8.9
2709	Crude petroleum oils	54,045	7.4
8473	Parts & accessories of computers & office machines	19,519	2.7
8517	Electric apparatus for line telephony, including current line system	13,987	1.9
8471	Automatic data processing machines; optical reader, etc	10,833	1.5
8802	Aircraft, (helicopter, aeroplanes) & spacecraft (satellites)	8,900	1.2
7108	Gold unwrought or in semi-manufactured forms	8,552	1.2
8708	Parts & accessories of motor vehicles	7,672	1.1
8541	Diodes/transistors&sim semiconductor devices; etc	7,552	1.0
8431	Machinery part (hs 84.25 to 84.30)	6,653	0.9
8443	Printing machinery; machines for uses ancillary to printing	6,335	0.9
8703	Cars (including station wagon)	5,800	0.8
8529	Part suitable for use solely/principally with televisions, receipt apparatus	5,767	0.8
8411	Turbo-jets, turbo-propellers and other gas turbines	5,756	0.8
8536	Electrical apparatus for switching (excluding fuse, switching, etc) not exceeding 1000 volt	5,205	0.7
8803	Aircraft parts	5,042	0.7
2711	Petroleum gases	4,861	0.7
3004	Medicament mixtures (not 3002, 3005, 3006), put in dosage	4,769	0.7
8525	Television camera, transmission apparatus for radio-telephony	4,535	0.6
	Top 10 commodities	322,488	44.4
	Others	403,866	55.6
	Total	726,354	100.0

Source: ASEAN Trade Statistics Database as of September 2010

03. ASEAN trade dependency

Table 27

Commodities with high-significant share in ASEAN trade, 2009

Trading partner country	HS Codes	Exports		HS Codes	Share (%)	Import Commodity
		Share (%)	Commodity			
Australia & New Zealand	2715	81.6	Bituminous mixtures from natural asphalt, natural & petroleum bitumen, mineral tar, mineral tar pitch bituminous mastics cut backs.	0204	98.5	Meat of sheep or goats - fresh, chilled or frozen
	1205	77.6	Rape or colza seeds, whether or not broken	1004	96.8	Oats
				0104	94.8	Live sheep and goats
				1002	94.5	Rye in the grain
				5101	91.2	Wool, not carded or combed
				0102	90.7	Live bovine animals, live cows, bulls, heifers
				0201	88.9	Meat of bovine animals, fresh or chilled beef, veal
				1502	86.4	Fats of Bovine, sheep & goat raw of rendered
				0503	77.8	Horsehair and horsehair waste
	Canada	no share above 75%			no share above 75%	
China	2612	100.0	Uranium or thorium ores and concentrates	5002	95.6	Raw silk (not thrown)
	2601	99.4	Iron ores & concentrates; including roasted iron pyrites	4204	90.6	Articles of leather or composition leather for technical uses
	2702	99.3	Lignite w/in agglomerated, excluding jet	2003	2003	Mushrooms & truffles, prepared or preserved
	2602	96.0	Manganese ores and concentrates etc	6603	87.8	Parts, trimmings and accessories of art of heading no 66.01 or 66.02
	2606	94.3	Aluminum ores and concentrates	9501	87.6	Wheeled toys designed to be ridden by children and dolls'
	0714	92.2	Manioc, arrowroot salem (yams) etc	6601	87.3	Umbrellas and sun umbrellas
	2607	87.3	Lead ores and concentrates	0502	85.4	Bristles, hair & waste of pigs,
	4005	87.3	Compounded rubber, unvulcanised, in primary forms	5302	85.3	True hemp, raw, processed, not spun; tow and waste of true hemp
	2610	84.0	Chromium ores and concentrates	2938	82.5	Glycosides & their salts, ethers, esters & other derivatives
	5305	80.2	Coconut, abaca, ramie & other vegetable fibers, raw, processed, not spun	2611	82.1	Tungsten ores and concentrates
	4702	78.5	Chemical wood pulp, dissolving grades	0704	81.8	Cabbages and cauliflowers, fresh or chilled
	2615	76.0	Niobium, tantalum, vanadium or zirconium ores and concentrates	2606	79.1	Aluminum ores and concentrates
				4417	78.8	Tools, tool & broom bodies & handles, shoe lasts of wood
			8715	77.9	Baby carriages and parts thereof	

Notes: The table list particular commodities with share of above 75% of total ASEAN export/import of the respective commodities to/from selected dialogue partner countries. Example: 98.5% of ASEAN import of meat of sheep or goat - fresh, chilled or frozen came from Australia and New Zealand.

Source: ASEAN Trade Statistics Database as of September 2010

03. ASEAN trade dependency

Table 27 (continue)
Commodities with high-significant share in ASEAN trade, 2009

Trading partner country	HS Codes	Share (%)	Exports		Imports	
			Commodity	HS Codes	Share (%)	Commodity
				6907	4.5	Unglazed ceramic flags&paving,hearth/wall tiles; mosaic cube
				0711	76.3	Vegetables, provisionally preserved (unfit for immediate consumption)
				8713	75.6	Invalid carriages (wheelchairs), w/in motorised
				0706	75.6	Carrots, turnips and salad beetroot, fresh or chilled
				6502	75.4	Hat-shapes, plaited or made by assembling strips of any material
				6702	75.1	Artificial flowers, foliage & fruit
EU 27	3001	99.8	Glands & extracts, secretions for organotherapeutic uses; heparin & its salts; other	8401	93.0	Nuclear reactor,fuel element for reactor
	5104	99.7	Garnetted stock of wool or of fine or coarse animal hair	3001	91.1	Glands & extracts, secretions for organotherapeutic uses; heparin & its salts; other
	0208	89.9	Other meat and edible meat offal fresh, chilled, frozen	2703	89.8	Peat (incl peat litter), w/in agglomerated
	2613	88.8	Molybdenum ores and concentrates	2208	89.2	Spirits, liqueurs, other spirit beverages, alcoholic preparations
	8712	88.3	Bicycles & other cycles, not motorised	8604	88.2	Railway maintenance-of-way service vehicles
	4416	82.3	Casks,barrels, vats,tubs etc.	4301	87.4	Raw furskins & pieces suitable for furriers' use, nes
	4302	81.6	Tanned or dressed furskins & pieces, unassembled or assembled	0601	86.9	Bulbs, tubers, corms, etc
	6801	80.7	Setts, curbstones and flagstones, of natural stone	8605	86.1	Railway passenger and special purpose coaches, not self-propelled
	0601	77.3	Bulbs, tubers, corms, etc	1210	84.2	Hop cones, fresh or dried
	2937	77.2	Hormones; their derivatives; steroids nes	8478	83.8	Machinery for preparing or making up tobacco
				1509	80.7	Olive oil and its fractions
				3303	75.3	Perfumes and toilet waters

Notes: The table list particular commodities with share of above 75% of total ASEAN export/import of the respective commodities to/from selected dialogue partner countries. Example: 88.2% of ASEAN import of Railway Maintenance came from EU.

Source: ASEAN Trade Statistics Database as of September 2010

03. ASEAN trade dependency

Table 27 (Continue)

Commodities with high-significant share in ASEAN trade, 2009

Dialogue partner country	SITC Code	Share (%)	Exports		Import	
			Commodity	SITC Code	Share (%)	Commodity
Japan	7501	99.92	Nickel matte,nickel oxide sinters	7107	97.37	Base metals clad with silver, n/w than semi-manufactured
	2830	99.79	Sulphides; polysulphides	2846	93.6	Rare-earth metal compounds of yttrium or scandium
	2616	99.4	Precious metal ores and concentrates	7111	93.41	Base metals, silver or gold, clad with plat, not further worked than semi-manufactured
	2846	91.14	Rare-earth metal compounds of yttrium or scandium	0903	93.23	Maté
	5003	83.97	Silk waste, including silk yarn waste etc	4.5	87.66	Microscopes other than optical microscopes; diffraction apparatus
	4406	83.1	Railway or tramway sleepers (cross-ties) of wood	5104	77.05	Garnetted stock of wool or of fine or coarse animal hair
	8530	82.71	Electrical signalling/traffic control equip for railway/road (o/t hs 8608)			
	7402	82.1	Unrefined copper; copper anodes for electrolytic refining			
	2510	81.97	Calcium and aluminum calcium phosphates, natural & phosphatic chalk			
	USA	9302	90.06	Revolvers and pistols, other than those of heading no 93.03 or 93.04	2303	86.78
0409		82.38	Natural honey			
9301		79.42	Military weapons, other than revolvers, pistols & arms of heading no 93.07			
9303		76.68	Other firearm & similer devices operating by the firing of an explosive charge			
2003		75.64	Mushrooms & truffles, prepared or preserved			
2938		75.11	Glycosides & their salts, ethers, esters & other derivatives			
India	1501	94.34	Lard and other pig&poultry fat	0501	90.39	Human hair, unworked
	3201	86.18	Vegetable tanning extracts; tanning & their salts	2305	85.47	Ground-nut oil-cake and other solid residues
	5002	81.99	Raw silk (not thrown)			
Pakistan	3805	75.12	Turpentine oils; crude dipentene; pine oil etc			
	2703	97.8	Peat (incl peat litter), w/n agglomerated oil etc	no share above 75%		
ROK	5507	100	Artificial staple fibres, carded, combed	7118	76.51	Coin
Russia	no share above 75%			no share above 75%		

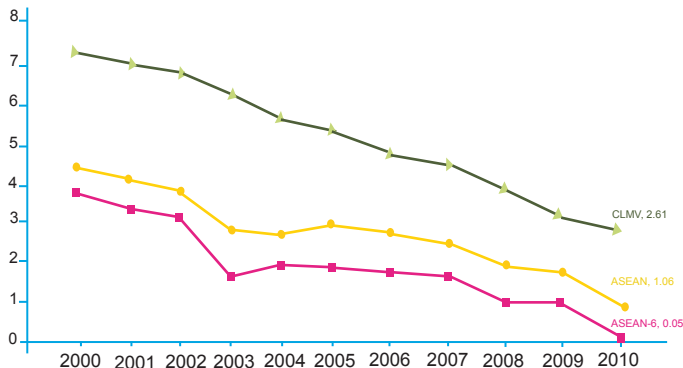
Notes: The table list particular commodities with share of above 75% of total ASEAN export/import of the respective commodities to/from selected dialogue partner countries. Example: 82.38% of ASEAN export of Natural Honey going to USA.

Source: ASEAN Trade Statistics Database as of September 2010

04. ASEAN trade liberalisation

Chart 1.

Average tariff rates on imports from ASEAN



Note: For 2010, Cambodia use the ASEAN Harmonised Tariff Nomenclature (AHTN) 2002 while the others use AHTN 2007

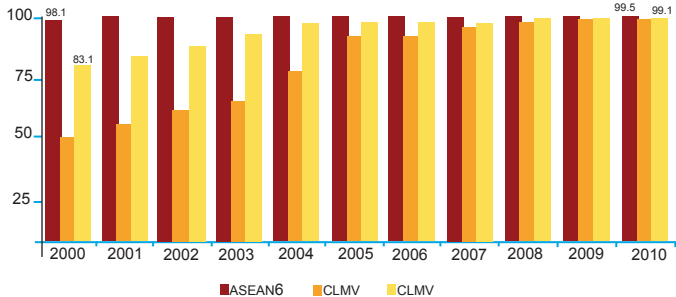
* CEPT - Common Effective Preferential Tariff

Source of data: ASEAN Tariff Database

04. ASEAN trade liberalisation

Chart 2.

Percent of tariff lines in the CEPT* Inclusion List (IL)



Note: For 2010, Cambodia use the ASEAN Harmonised Tariff Nomenclature (AHTN) 2002 while the others use AHTN 2007

* CEPT - Common Effective Preferential Tariff

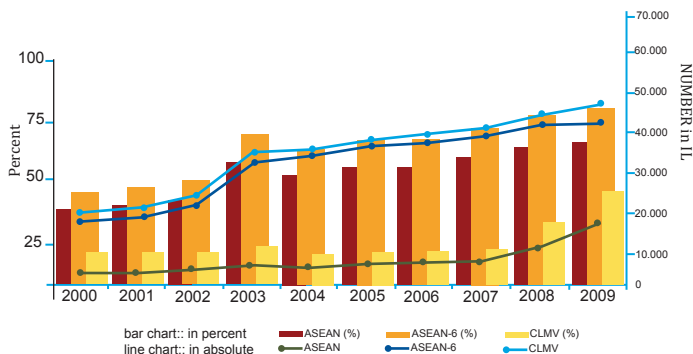
Source: ASEAN Tariff Database

» The percentage of tariff lines in the CEPT inclusion list of CLMV have increased steadily, and progressively narrowed the gap between ASEAN6 and CLMV over the years. As of 2010, both ASEAN6 and CLMV have placed more than 99% of their tariff lines under the CEPT Scheme.

04. ASEAN trade liberalisation

Chart 3.

Percent of items in the CEPT* Inclusion List (IL) with 0 tariff



Note: For 2010, Cambodia uses the ASEAN Harmonized Tariff Nomenclature (AHTN) 2002 while the others use AHTN 2007

* CEPT - Common Effective Preferential Tariff

Source: ASEAN Tariff Database

» The number of items in the CEPT inclusion list with zero tariff in ASEAN6 increased significantly in 2003 and continued to increase until 2010. The growth in CLMV was more modest. In percentage terms, the growth in ASEAN6 showed a break in 2005 and 2006; but it was due to the rapid increase of the number of items in the CEPT IL.

05. ASEAN trade in priority integration sectors

Table 28
Trend of ASEAN exports of its seven priority integration sector's products

Priority Integration Sector	Unit/Scale	2003	2007	2008	2009
Agro-based	Value (US\$ million)	11,761	26,279	38,232	29,554
	Growth (%)	29.9	56.3	45.5	(22.7)
	Share to total (%)	2.6	3.1	3.9	3.6
Rubber-based	Value (US\$ million)	6,845	19,817	21,815	18,228
	Growth (%)	24.0	16.0	10.1	(16.4)
	Share to total (%)	1.5	2.3	2.2	2.2
Wood-based	Value (US\$ million)	10,151	15,931	13,452	10,433
	Growth (%)	6.1	6.9	(15.6)	(22.4)
	Share to total (%)	2.2	1.9	1.4	1.3
Fisheries	Value (US\$ million)	6,830	12,370	12,665	11,417
	Growth (%)	13.5	13.9	2.4	(9.9)
	Share to total (%)	1.5	1.4	1.3	1.4
Textiles and apparel	Value (US\$ million)	21,924	35,047	35,608	29,981
	Growth (%)	17.9	6.4	1.6	(15.8)
	Share to total (%)	4.8	4.1	3.6	3.7
Electronics	Value (US\$ million)	193,766	294,167	196,158	156,517
	Growth (%)	96.4	(2.6)	(33.3)	(20.2)
	Share to total (%)	42.8	34.2	20.1	19.3
Automotive	Value (US\$ million)	11,387	36,067	43,233	33,009
	Growth (%)	76.3	25.8	19.9	(23.6)
	Share to total (%)	2.5	4.2	4.4	4.1

Source: ASEAN Trade Statistics Database as of September 2010

» Export of products under the electronic priority integration sector surpassed US\$ 294 billion in 2007, which was around 34% of total ASEAN export, but declined sharply to US\$ 156 billion in 2009 following a significant decline in 2008. Export products under other priority integration sectors ranged from around US\$ 10 billion to around US\$ 33 billion in 2009.

» Export of products under seven priority integration sectors decreased significantly in 2009.

06. ASEAN trade in priority integration sectors

Table 29
Trend of intra-ASEAN export of its seven priority integration sector's products

Priority Integration Sector	Unit/Scale	2003	2007	2008	2009
Agro-based	Value (US\$ million)	1,268	3,103	4,405	3,566
	Growth (%)	23.6	42.7	42.0	(19.0)
	Share in total Export of Intra ASEAN (%)	1.1	1.4	1.8	1.8
Rubber-based	Value (US\$ million)	680	2,603	2,761	2,603
	Growth (%)	66.0	8.6	6.1	(5.7)
	Share in total Export of Intra ASEAN (%)	0.6	1.2	1.1	1.3
Wood-based	Value (US\$ million)	729	1,159	961	716
	Growth (%)	15.0	13.4	(17.1)	(25.5)
	Share in total Export of Intra ASEAN (%)	0.6	0.5	0.4	0.4
Fisheries	Value (US\$ million)	536	1,013	1,099	924
	Growth (%)	4.0	23.4	8.5	(16.0)
	Share in total Export of Intra ASEAN (%)	0.5	0.5	0.4	0.5
Textiles and apparel	Value (US\$ million)	2,052	3,592	3,689	3,186
	Growth (%)	37.9	10.3	2.7	(13.6)
	Share in total Export of Intra ASEAN (%)	1.8	1.7	1.5	1.6
Electronics	Value (US\$ million)	45,096	70,447	47,453	36,402
	Growth (%)	104.3	(2.9)	(32.6)	(23.3)
	Share in total Export of Intra ASEAN (%)	39.0	32.4	19.0	18.2
Automotive	Value (US\$ million)	3,827	11,000	13,939	11,344
	Growth (%)	94.0	19.1	26.7	(18.6)
	Share in total Export of Intra ASEAN (%)	3.3	5.1	5.6	5.7

Source: ASEAN Trade Statistics Database as of September 2010

» Intra-ASEAN trade of products under the priority integration sectors are insignificant in terms of value, except for those under the electronics sector which comprised around 40% of ASEAN total electronics trade in 2003, although its share declined to 18.2% in 2009.

06. ASEAN foreign direct investment

Table 30

Trend of foreign direct investment (FDI) inflows in ASEAN

Categories	2000	2003	2006	2007	2008	2009
Value of FDI inflow (US\$ million)						
Total	23,541.3	24,234.7	56,354.9	74,395.3	49,468.8	39,387.3
Intra-ASEAN	761.9	2,702.0	7,755.6	9,682.0	9,568.3	5,172.2
Rest of the World	22,964.9	21,364.7	47,002.3	63,746.3	39,591.5	33,520.4
Unspecified	-185.5	168.0	1,597.0	967.0	309.0	694.7
Shares in Total FDI inflow (%)						
Total	100.0	100.0	100.0	100.0	100.0	100.0
Intra-ASEAN	3.2	11.1	13.8	13.0	19.3	13.1
Rest of the World	97.6	88.2	83.4	85.7	80.0	85.1
Unspecified	-0.8	0.7	2.8	1.3	0.6	1.8

Source: ASEAN Investment Statistics Database as of 31 December 2010, based on country submission

» Total FDI inflow decreased to US\$ 39.4 billion in 2009 from US\$ 74.3 billion in 2007 and US \$ 49.5 in 2008.

» About 85% of FDI inflows to ASEAN in 2009 came from the Rest of the World, while intra-ASEAN FDI inflow contributed only around 13%.

06. ASEAN foreign direct investment

Table 31
Trend of FDI inflow into ASEAN by host country (in US\$ million)

Host Country	2000	2003	2006	2007	2008	2009	Share in 2009
Brunei Darussalam	549	3,123	434	260	239	370	0.9
Cambodia	149	84	483	867	815	530	1.3
Indonesia	-4,550	-596	4,914	6,928	9,318	4,877	12.4
Lao PDR	34	20	187	324	228	319	0.8
Malaysia	3,788	2,473	6,072	8,538	7,318	1,381	3.5
Myanmar	208	291	428	715	976	579	1.5
Philippines	2,240	491	2,921	2,916	1,544	1,948	4.9
Singapore	16,485	11,664	29,056	35,778	10,912	16,809	42.7
Thailand	3,350	5,235	9,460	11,330	8,539	4,976	12.6
Viet Nam	1,289	1,450	2,400	6,739	9,579	7,600	19.3
ASEAN	23,541	24,235	56,355	74,395	49,469	39,387	100.0
CLMV	1,679	1,845	3,498	8,645	11,597	9,027	22.9
ASEAN6	21,862	22,390	52,856	65,751	37,871	30,360	77.2

Source: ASEAN Investment Statistics Database as of 31 December 2010, based on country submission

» In 2009, 43% of FDI inflows to ASEAN went to Singapore, 13% to Thailand 19% and 12% respectively to Viet Nam and Indonesia.

» In the same year, ASEAN 6 received 77% of FDI inflows to ASEAN while CLMV received about 23%.

06. ASEAN foreign direct investment

Table 32
Trend of FDI inflow into ASEAN by source country (in US\$ million)

Source Country	2003	2006	2007	2008	2009	Share in 2009
ASEAN	2,702	7,756	9,682	9,568	5,172	13.1
Australia	157	317	1,491	880	671	1.7
Canada	101	255	394	792	488	1.2
China	187	1,046	1,684	2,100	1,505	3.8
EU27	6,679	13,159	17,766	9,249	7,523	19.1
India	102	-282	1,466	591	970	2.5
Japan	3,908	10,440	8,829	4,582	5,961	15.1
New Zealand	88	-209	101	-177	231	0.6
Pakistan	2	10	21	6	8	0.0
Republic of Korea	550	1,246	2,716	1,553	1,500	3.8
Russia	n.a	1	31	82	157	0.4
USA	1,495	3,018	8,068	4,812	3,006	7.6
Rest of the World	8,096	18,001	21,180	15,122	11,499	29.2
Unspecified	168	1,597	967	309	695	1.8
Total	24,235	56,355	74,395	49,469	39,387	100.0

Source: ASEAN Investment Statistics Database as of 31 December 2010, based on country submission

» EU27 and ASEAN are among the perennial top sources of FDI inflows to ASEAN.

» In 2009, EU27 contributed around 19% of FDI inflows to ASEAN, followed by Japan 15% ASEAN with ASEAN 13%; and USA 7.6%.

07. ASEAN tourism

Table 33
Trend in tourist arrivals by host country (in thousand)

Host Country	2005	2006	2007	2008	2009
Brunei Darussalam	127	158	179	226	157
Cambodia	1,422	1,700	2,015	2,125	2,162
Indonesia	5,002	4,871	5,506	6,429	6,452
Lao PDR	1,095	1,215	1,624	2,005	2,008
Malaysia	16,431	18,472	20,236	22,052	23,646
Myanmar	660	653	732	661	763
Philippines	2,623	2,688	3,092	3,139	3,017
Singapore	8,942	9,752	10,288	10,116	9,681
Thailand	11,517	13,822	14,464	14,597	14,150
Viet Nam	3,468	3,583	4,150	4,254	3,772
ASEAN	51,288	56,914	62,285	65,605	65,809
ASEAN6	44,643	49,763	53,764	56,561	57,104
CLMV	6,645	7,152	8,521	9,045	8,705
Share (%)					
ASEAN	100.0	100.0	100.0	100.0	100.0
ASEAN6	87.0	87.4	86.3	86.2	86.8
CLMV	13.0	12.6	13.7	13.8	13.2

- Notes:** 1. Starting 2004 Brunei Darussalam applies new methodology in collecting tourist arrival data
 2. CLMV comprise Cambodia, Lao PDR, Myanmar and Viet Nam
 3. ASEAN 6 consist of Brunei Darussalam, Indonesia, Malaysia, Philippines, Singapore and Thailand

Source: ASEAN NTO's as compile in the ASEAN Tourism Database as of January 2011

» In 2009 more than 65 million tourists visited ASEAN. More than 23 million tourist visited Malaysia and around 14 million went to Thailand in 2009. Singapore played host to a round 10 million tourist arrivals in 2009, while Indonesia received around 6 million in 2009.

» Collectively, ASEAN6 got about 87% of all tourist who visited ASEAN in 2009 while CLMV had 13%.

07. ASEAN tourism

Table 34
Rate of growth of tourist arrivals in ASEAN (in percent)

Host Country	2004	2005	2006	2007	2008	2009
Brunei Darussalam	6.0	7.0	24.3	12.9	26.4	-30.3
Cambodia	-10.9	34.7	19.6	18.5	5.5	1.7
Indonesia	-11.0	-6.0	-2.6	13.0	16.8	0.4
Lao PDR	-13.5	22.4	10.9	33.6	23.5	0.2
Malaysia	-20.4	4.6	12.4	9.6	9.0	7.2
Myanmar	174.9	0.5	-1.1	12.1	-9.7	15.4
Philippines	-1.3	14.5	2.5	15.0	1.5	-3.9
Singapore	-19.0	6.8	9.0	5.5	-1.7	-4.3
Thailand	-6.6	-1.9	20.0	4.6	0.9	-3.1
Viet Nam	-7.6	18.4	3.3	15.8	2.5	-11.3
ASEAN	-12.3	4.5	11.0	9.4	5.3	0.3
ASEAN6	-13.7	2.5	11.5	8.0	5.2	1.0
CLMV	-0.1	20.1	7.6	19.1	6.2	-3.8

Notes: 1. Starting 2004 Brunei Darussalam applies new methodology in collecting tourist arrival data

2. CLMV comprise Cambodia, Lao PDR, Myanmar and Viet Nam

3. ASEAN6 consist of Brunei Darussalam, Indonesia, Malaysia, Philippines, Singapore and Thailand

Source: ASEAN NTO's as compile in the ASEAN Tourism Database as of January 2011

07. ASEAN tourism

Table 35
Tourist arrivals by country of origin, sorted by the 2009 shares

Country of Origin	Tourist arrival (000)		Share (%)	
	2008	2009	2008	2009
ASEAN	30,276	31,309	46.1	47.6
Australia	2,905	3,012	4.4	4.6
China	4,471	4,186	6.8	6.4
Europe	8,208	8,060	12.5	12.2
India	1,985	2,087	3.0	3.2
Japan	3,624	3,189	5.5	4.8
Rep of Korea	2,657	2,427	4.1	3.7
USA	2,653	2,391	4.0	3.6
Rest of the World	8,826	9,147	13.5	13.9
TOTAL	65,605	65,809	100.0	100.0

Note: Starting 2004, Brunei Darussalam applies a new methodology in collecting tourist arrival data

Source: ASEAN NTO's as compile in the ASEAN Tourism Database as of January 2011

- » More than 47% of tourist arrivals in ASEAN came from ASEAN Member States.
- » Europe is the next largest source of tourists to ASEAN contributing around 12% of the total, followed by China Japan and Australia.

08. ASEAN telecommunications

Table 36
ASEAN internet subscribers/users per 1000 persons

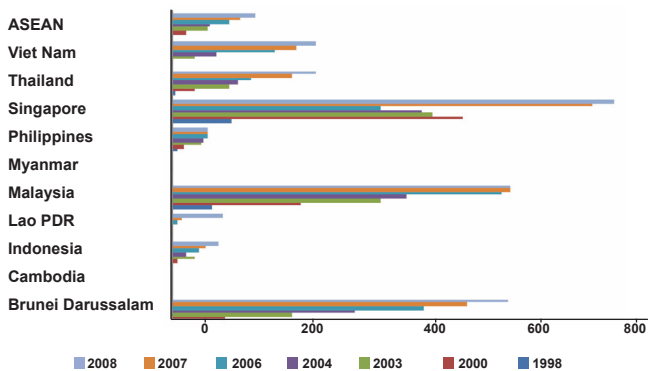
Country	1998	2000	2003	2006	2007	2008
Brunei Darussalam	63.5	90.4	199.3	416.9	488.2	553.0
Cambodia	0.2	0.5	2.5	4.6	4.9	5.0
Indonesia	2.5	9.2	37.6	46.9	57.9	79.0
Lao PDR	0.1	1.1	3.3	11.6	16.4	85.0
Malaysia	69.0	213.9	345.0	542.3	557.0	558.0
Myanmar	0.0	0.0	0.2	0.7	2.2	2.0
Philippines	11.3	20.1	49.3	59.2	59.7	62.0
Singapore	100.2	481.7	429.1	345.9	692.4	730.0
Thailand	8.3	37.4	95.5	130.7	200.3	239.0
Viet Nam	0.1	2.5	37.8	172.1	207.6	239.0
ASEAN	3.2	25.1	58.7	96.9	114.9	137.2

Source: ASEAN statistical yearbook 2010, taken from ASEAN telecommunications agencies (as published on official website and publications)

08. ASEAN telecommunications

Chart 4

ASEAN internet subscribers/users per 1000 persons



08. ASEAN telecommunications

Table 37
Cellular/mobile phone density (number of units per 1000 persons)

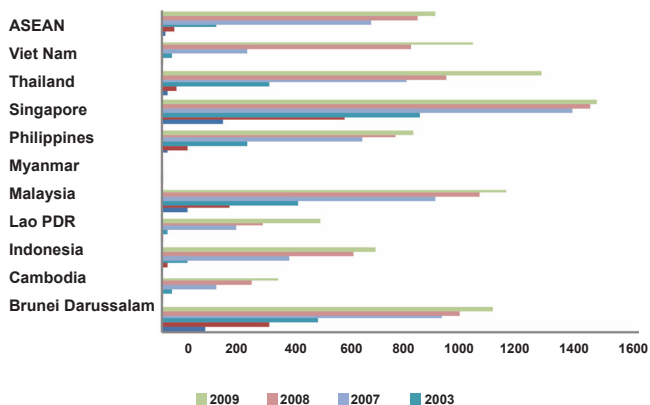
Country	1998	2000	2003	2006	2007	2008
Brunei Darussalam	151.7	350.0	507.3	906.6	958.5	1,066.6
Cambodia	5.1	10.4	35.2	180.4	291.0	377.8
Indonesia	10.7	18.0	86.0	415.7	618.3	692.5
Lao PDR	1.2	2.0	19.8	242.7	325.9	511.8
Malaysia	89.0	220.0	444.1	879.2	1,025.9	1,106.0
Myanmar	0.1	0.3	1.2	5.0	7.4	9.0
Philippines	23.7	84.4	277.7	646.4	753.9	809.8
Singapore	260.1	590.2	830.6	1,321.0	1,381.5	1,404.3
Thailand	16.5	50.4	345.7	791.3	920.1	1,225.7
Viet Nam	3.5	9.9	33.4	275.6	803.7	1,005.6
ASEAN	16.7	42.3	176.5	675.9	824.1	884.4

Source: ASEAN Statistical Yearbook 2010, taken from ASEAN telecommunications agencies (as published on official websites and publications)

» The number of cellular/mobile phone units per 1,000 persons continue to increase in ASEAN Member States, but the disparity is quite wide among the countries.

09. ASEAN social development

Chart 5
Cellular/mobile phone density (number of units per 1000 persons)



09. ASEAN social development

Table 38
Distribution of ASEAN Population by Age Group, 2009

Country	Age Group in percent					Total
	0-4	5-19	20-54	55-6	> 65	
Brunei Darussalam	8.5	26.2	57.2	4.6	3.4	100.0
Cambodia	12.6	34.6	44.6	4.5	3.8	100.0
Indonesia	9.2	26.9	52.4	6.4	5.1	100.0
Lao PDR	14.2	35.8	41.9	4.4	3.8	100.0
Malaysia	11.4	29.7	47.9	6.4	4.5	100.0
Myanmar ^{1/}	11.7	29.8	46.1	6.5	5.9	100.0
Philippines	11.9	32.4	46.1	5.4	4.2	100.0
Singapore ^{2/}	5.4	20.7	55.4	9.9	8.5	100.0
Thailand	6.6	22.3	54.6	8.8	7.7	100.0
Viet Nam ^{3/}	7.5	28.7	50.9	5.7	7.2	100.0
ASEAN^{4/}	9.5	28.1	50.3	6.4	5.6	100.0

Sources: Brunei Darussalam Key Indicators, 2009; Lao PDR, NSC Official Website as of July 2010; Statistical Handbook of Viet Nam, 2009; and data submission from the rest of ASEAN Member States

Notes:

- 1) Applying 2008 age structure
- 2) Total Singapore residence only -- different from total population in Table I.1
- 3) Applying 2003 age structure
- 4) Total ASEAN exclude Singapore's non-resident's population

09. ASEAN social development

Table 39

Percentage of Population living under PPP \$1.25 and \$2 a day, 2000-2008 (in percent)

Country	PPP \$1.25	PPP \$2
Brunei Darussalam	NA	NA
Cambodia	25.8	57.8
Indonesia	29.4	54.6
Lao PDR	44.0	76.9
Malaysia	2.00	7.8
Myanmar	-	-
Philippines	22.6	45.0
Singapore	-	-
Thailand	2.00	11.5
Viet Nam	21.5	48.4

Notes: Data refer to the most recent year available during the period specified (2000-2008).

Sources: PPP \$2 taken from Human Development Report, 2009 and ADB Key Indicators 2010; Poverty Rates; Povcal/Net, The World Bank at <http://iresearch.worldbank.org/PovcalNet/jsp/CCoiceControl.jsp>?
PPP \$1,25 taken from MDG database 2009 at <http://mdgs.un.org/unsd/mdg/News.aspx?ArticleId=45>

09. ASEAN social development

Table 40
Poor population based on National Poverty Line

Country	2000	2003	2005	2007
Brunei Darussalam	NA	NA	NA	NA
Cambodia	35.9 ^a	34.7 ^f	30.1	
Indonesia	19.1	17.4	16.7	16.6
Lao PDR	38.6 ^b	32.7	-	-
Malaysia	7.5 ^a	5.1 ^d	5.7 ^f	3.6
Myanmar	26.6 ^e	32.0	-	
Philippines	39.4	30.0	32.9 ^g	-
Singapore	NA	NA	NA	NA
Thailand	14.2	9.8 ^d	12.0	8.5 ^h
Viet Nam	37.0 ^c	28.9 ^d	16.0 ^g	14.8 ^h

Notes: a 1999; b 1996; c 1998; d 2002; e 2001; f 2004; g 2006; h 2008. Brunei Darussalam and Singapore do not have poverty data.

Sources: Asian Development Bank, Key Indicators 2007, 2008 unless otherwise specified; UN Statistics, MDG indicators (Viet Nam 2002); Myanmar Household Income and Expenditures Survey (Myanmar 2001); ASEAN, Statistical Yearbook 2004 (Indonesia 2003); ASEAN Statistical Yearbook 2005-2008 (2000 figures for Indonesia, Thailand, Viet Nam, Malaysia, Lao PDR, Cambodia and Myanmar); ASEAN Yearbook 2010; BPS for Indonesia 2005 data; National Statistical Coordination Statistical Board for Philippines

09. ASEAN social development

Table 41

Gini coefficient in ASEAN Member States (in percent)

Country	2003	2005	2006	2007
Brunei Darussalam	0.413	0.413	-	-
Cambodia	0.403 ^c	0.419	-	0.442
Indonesia	0.320	0.343	0.357	0.376
Lao PDR	0.326	-	-	-
Malaysia	0.485 ^b	0.379	-	-
Myanmar	0.300 ^d	-	-	-
Philippines	0.461	0.440	0.456	-
Singapore ^a	0.460	0.470	0.476	-
Thailand	0.418 ^b	0.425	0.418	-
Viet Nam	0.420 ^b	0.378	0.378	-

Notes: a Measures the degree of inequality in monthly income from work per household member among employed households; b 2002; c 2004; d 2001
 Figures in italics are revised/updated data relative to the previous edition of the ACIF

Sources: Brunei Darussalam MDG's 2005 (1997/98 HES); Cambodia, CSES 2004; Malaysia, Department of Statistics; Myanmar, Household Income and Expenditure Survey, 2001; Philippines, Family Income and Expenditure Survey (FIES), National Statistics Office; Thailand, National Statistical Office; Singapore, Singapore Department of Statistics; Indonesia, "Analisis Dan Penghitungan Kemiskinan 2006", BPS; Lao PDR, Lao Expenditure and Consumption Survey (LECS) 3 (2002/3), National Statistics Centre (NSC); Viet Nam, Viet Nam Households Living Standards Survey (VHLSS)

09. ASEAN social development

Table 42
Life expectancy at birth (in years)

Country	Female		Male		Both Sexes		
	2005	2008	2005	2008	2005	2007	2008
Brunei Darussalam	77.8	79.8	75.2	76.6	76.7	77.3	77.4
Cambodia ^a	64.1	62.8	57.9	59.2	58.0	59.3	61.0
Indonesia	71.1	72.8	67.1	68.8	69.0	70.6	70.8
Lao PDR	63.0	66.4	59.0	63.6	61.0	64.4	65.0
Malaysia	76.2	76.8	71.4	72.1	73.7 ^c	74.3	74.4
Myanmar ^b	64.0	63.8	58.0	59.4	60.8	62.1	61.6
Philippines	70.1	74.1	64.1	69.7	67.1	71.7	71.8
Singapore ^d	81.5	83.2	77.7	78.4	80.1	80.5	80.7
Thailand	75.0	72.1	67.9	65.8	69.6	70.6	68.9
Viet Nam	73.0	76.4	69.0	72.5	73.7	74.2	74.4

Notes: a Figures not consistent with data by sex because of different sources; b Data from HDR were obtained because data provided are only for urban-rural; c Preliminary estimate; d Residents only.

Sources: UNDP Human Development Reports (HDR) for Brunei Darussalam, Cambodia, Myanmar, Philippines, Thailand and Viet Nam; Indonesia, BPS, Population Projection 2000-2020; Lao PDR, NSC Population and Housing Census 2005 (2005) and UNDP HDR (2003); Malaysia, Department of Statistics; Singapore, Department of Statistics, Brunei darussalam data by sex; Departemen of Economic Planning and Development; Cambodia by sex; First Revision Population Projections for Cambodia, 1998-2020, NIS/UNFPA; Philippines, National Statistics Office, Thailand, National Statistics Office. ADB Key Indicators for Asia and the Pacific for both sexes in 2007 and 2008.

09. ASEAN social development

Table 43
Infant mortality rate (per 1000 live births)

Country	2003	2005	2006	2007	2008
Brunei Darussalam	9.5	7.4	6.6	7.6	7.0
Cambodia	80.0	73.0	70.0	70.0	69.0
Indonesia	34.7	32.3	30.8	25.0	31.0
Lao PDR	82.2 ^b	70.0	67.2	64.4	61.8
Malaysia	6.6	6.6	6.1	6.3	6.0
Myanmar	45.3	45.1	69.0	74.0	71.0
Philippines	29.0	26.0	25.0	23.0	26.0
Singapore ^a	2.5	2.1	2.6	2.1	2.1
Thailand	7.2	7.6	17.0	6.0	13.0
Viet Nam	18.0	16.0	16.0	13.0	12.0

Notes: a Residents only; b 2000

Figures in *italics* are revised/updated data relative to the previous edition of the ACIF

Sources: Brunei Darussalam, Ministry of Health, Dept of Immigration and National Registration; Lao PDR, NSC website; Philippines, 2003 National Demographic and Health Survey (NDHS) and Family Planning Survey, NSO; Indonesia, BPS Laporan Perkembangan Pencapaian MDG; Singapore, Immigration & Checkpoint Authority (ICA); Department of Statistics (DOS), Administrative Records; Thailand, National Statistics Office; Malaysia, Department of Statistics; Myanmar, based on Vital Registration System, CSO; Cambodia, First Revision Population Projections for Cambodia 1998-2020, NIS/UNFPA; Viet Nam, General Statistics Office

09. ASEAN social development

Table 44

Government health expenditure as percentage of GDP (in percent)

Country	2003	2005	2007	2008	2009
Brunei Darussalam	2.50	1.70	1.40	-	-
Cambodia	0.90	0.90	1.00	1.00	-
Indonesia	0.40	-	-	-	-
Lao PDR	-	-	-	-	-
Malaysia	2.10	1.70	1.80	1.80	2.00
Myanmar	-	-	-	-	-
Philippines	0.30	0.30	0.30	0.30	0.50
Singapore	1.40	0.90	0.80	1.00	-
Thailand	1.60	1.40	1.60	1.90	2.00
Viet Nam	-	-	-	-	-

Source: Taken from ADB Key Indicators for Asia and the Pacific, 2008-2010

09. ASEAN social development

Table 45
Prevalence of under weight children under 5 year of age (in percent)

Country	2003	2005	2006
Brunei Darussalam	1.0	0.9	0.9
Cambodia	45.0 ^a	35.6	-
Indonesia	28.2	28.0	-
Lao PDR	-	39.9 ^b	37.0
Malaysia	10.6	8.1	-
Myanmar	31.8	-	-
Philippines	26.9	-	24.6
Singapore	-	-	-
Thailand	8.7	2.8	-
Viet Nam	28.4	25.2	20.0

Notes: a 2000 data; b males only for 2005.

Figures in italics are revised/ updated data relative to the previous edition of the ACIF

Sources: Brunei Darussalam: Ministry of Health, Brunei Darussalam Key Indicators 2008; Cambodia: CDHS 2000 and 2005; Indonesia, BPS, Laporan hasil Survey Garam Yodium; Lao PDR: MICS 2006; Malaysia: ADB Key Indicators 2007, 2008; Myanmar, Multi Indicators Cluster Survey, Departement of Health Planning; Philippines: FNRI, National Nutrition Survey; Thailand: NSO; Viet Nam: Ministry of Health; United Nations Children's Fund for 2006 data and revised data in italic

09. ASEAN social development

Table 46

Adult literacy rate 15 Years old and above (in percent)

Country	Female		Male		Total	
	2005	2007	2005	2007	2007	2008
Brunei Darussalam	91.5 ^a	91.5	95.8 ^a	95.8	94.9	95.0
Cambodia	71.2	67.7	87.8	85.8	76.3	77.6
Indonesia	87.5	88.0	94.3	94.9	91.4	-
Lao PDR	63.2	66.6	82.5	80.0	73.4	-
Malaysia	98.3	98.5	98.5	98.5	91.9	92.1
Myanmar	93.7	94.6	94.5	94.9	-	91.9
Philippines	-	93.7	-	93.1	93.4	93.6
Singapore	92.7	93.8	97.4	97.7	96.0	94.5
Thailand	91.5	92.6	95.6	95.9	94.1	-
Viet Nam	95.9 ^b	90.2	93.0	95.1	-	92.5

Notes: a 2002 data; b 2004

Figures in italics are revised/ updated data relative to the previous edition of the ACIF

Sources: Brunei Darussalam, (2003) Population Census 2001, Dept. Of Economic Planning and Development and Brunei Key Indicators, 2008; Indonesia, BPS; Malaysia, Department of Statistics; Myanmar Dept. Of Education Planning and Training; Philippines, Functional Literacy, Education, and Mass Media Survey (for 2003); Singapore, Dept. of Statistics; Thailand, (2005) Bureau of Policy and Strategy; Viet Nam, GSO, UNDP HDR 2005 for 2003 for Cambodia, Lao PDR, Thailand (2003 data), Philippines (2005); Cambodia, ASEAN Stat Yearbook 2006-2010 and Cambodia Socioeconomic Survey 2004; Thailand data by sex, 2005 data taken from ADB Key Indicators 2010; UNDP Human Development Reports. ADB Key Indicators for Asia and the Pacific, 2008 for 2007 figures except for Malaysia.

09. ASEAN social development

Table 47
Net primary enrolment rate (in percent)

Country	Female		Male		Both sexes	
	2005	2007	2005	2007	2007	2008
Brunei Darussalam ^a	97.6	96.9	96.2	96.2	96.5	97.3
Cambodia	89.7	87.8	93.0	91.7	89.4	88.6
Indonesia	93.3	93.5 ^d	93.3	93.8 ^d	94.8	98.7
Lao PDR	81.0	77.8	86.0	81.8	86.3	82.4
Malaysia ^b	92.4	96.0	91.6	96.2	96.1	-
Myanmar	81.2	81.6 ^d	81.4	82.7 ^d	-	-
Philippines	85.4	91.9	83.6	89.8	91.7	92.1
Singapore	95.4	94.4 ^d	96.0	94.9 ^d	-	-
Thailand	-	86.0 ^d	104.2	90.0 ^d	93.9	90.1
Viet Nam	92.0 ^c	-	97.6 ^c	-	-	-

Notes: a Gross primary enrolment is used; b does not include private schools; c 2001 data; d 2006.

Sources: Brunei Darussalam, Government and Private Schools Administrative Data; Cambodia, Planning Department Ministry of Education, Youth and Sport; Indonesia, BPS; Lao PDR, UN Statistics, MDG Indicators; Malaysia, Department of Statistics; Myanmar, Department of Education Planning and Training; Philippines, Department of Education Basic Education Information System; Singapore, Ministry of Education; Thailand, National Statistical Office; Viet Nam, UN Statistics Division, MDG Indicators

09. ASEAN social development

Table 48
Unemployment rate by gender (in percent)

Country	Female		Male		Both Sexes		
	2005	2008	2005	2008	2007	2008	2009
Brunei Darussalam ^a	5.6 ^d	4.9 ^c	4.2 ^d	2.4 ^c	3.4	3.7	-
Cambodia	2.7 ^d	1.8	1.9 ^d	1.5	0.7	1.6	-
Indonesia	14.7	9.7	9.3	7.6	9.1	8.4	7.9
Lao PDR	1.2	-	1.3	-	-	-	-
Malaysia	3.7	3.7	3.4	3.2	3.2	3.3	3.7
Myanmar	4.6	4.6	3.7	3.7	4.0	4.0	-
Philippines ^e	7.3	6.0	7.4	6.4 ^c	6.3	6.8	7.1
Singapore ^b	6.4	4.3	5.0	3.7	4.0	4.0	4.0
Thailand	1.7	1.3	1.9	1.3	1.4	1.3	1.0
Viet Nam	2.4 ^d	-	1.9	-	4.6	4.7	4.6

Notes: a Aged 15 to 64 years; b Resident Unemployment rate (annual average) Resident refers to Singapore citizen and Singapore Permanent Resident; c 2007 data; d 2004 data; e National Statistics Office's (NSO) definition of unemployment for 2005 differs from that of 2003.

Figures in italics are revised/updated data relative to the previous edition of the ACIF

Sources: Compiled from data submission; Brunei Darussalam, dept. of Economic Planning and Development; Cambodia, Cambodia Socio-Economic Survey 2004 (CSES2004); Indonesia, BPS-Statistics Indonesia; Lao PDR Population and Housing Census 2005, NSC; Malaysia, Department of Statistics; Myanmar, Labour Force Survey, Department of Labour; Philippines, Labour Force Survey (LFS) October round, PNSO; Singapore, Labour Force Survey; General Household Survey and Population Survey, Dept of Statistics and Ministry of Manpower; Thailand, The Labour Force Survey and Report of the Labour Force Survey, NSO Ministry of Information and Communication Technology; Viet Nam, NGKT2006 (Statistical Yearbook 2006), country

09. ASEAN social development

Table 49

Labour force participation rate by gender (in percent)

Country	Female		Male		Both Sexes			
	2005	2008	2005	2008	2005	2007	2008	2009
Brunei Darussalam	57.6	56.9 ^b	78.0	77.6 ^b	68.3	67.8	67.8	-
Cambodia	70.7 ^a	76.0	78.9 ^a	80.8	74.6 ^a	75.0	78.3	-
Indonesia	50.7	51.1	85.6	83.5	68.0	67.0	67.2	67.6
Lao PDR	-	-	-	-	-	-	-	-
Malaysia	45.9	45.7	80.0	79.0	63.3	63.2	62.6	62.9
Myanmar	49.1	50.1	81.1	82.5	65.0	65.8	66.2	-
Philippines	49.8	48.2 ^b	79.8	78.3 ^b	64.8	63.2	63.7	64.0
Singapore	52.0	54.2	74.4	76.3	63.0	65.1	65.0	65.6
Thailand	64.3	16.1	81.1	20.3	72.5	72.4	18.1	-
Viet Nam	-	-	-	-	51.2	51.9	55.5	-

Notes: a 2004 data; b 2007 data

Figures in italics are revised/updated data relative to the previous edition of the ACIF

Source: ASEAN Statistical Yearbook 2008 & 2010

09. ASEAN social development

Table 50
Employment by sector (in percent)

Sector	Brunei Darussalam (1995)	Cambodia (2004)	Indonesia (2009)	Lao PDR	Malaysia (2009)
Agriculture, Fishery & Forestry	2.04	60.30	41.18	-	13.90
Manufacturing	5.78	9.50	12.07	-	16.10
Construction	50.42	2.60	4.41	-	8.90
Wholesales & Retail Trade, Restaurants, & Hotels	15.63	14.50	20.90	-	24.10
Transportation, Storage, Communication	5.71	2.60	5.69	-	5.40
Finance, Insurance, Real Estate and Business Services	6.80	0.40	1.42	-	8.10
Public Services	5.65	9.70	13.03	-	22.40
Others (Mining & Quarrying, Electricity, Gas & Water, Unknown)	7.95	0.40	1.29	-	1.10
Total	100.00	100.00	100.00	-	100.00

Sector	Myanmar (1996)	Philippines (2009)	Singapore (2009)1/	Thailand (2009)	Viet Nam (2006)
Agriculture, Fishery & Forestry	66.58	34.00	-	40.39	51.92
Manufacturing	8.76	8.30	15.70	13.65	14.35
Construction	2.10	5.30	6.09	5.50	5.64
Wholesales & Retail Trade, Restaurants, & Hotels	9.72	22.30	21.25	22.84	12.77
Transportation, Storage, Communication	2.62	7.70	14.67	2.96	2.53
Finance, Insurance, Real Estate and Business Services	7.86	4.20	19.54	3.07	1.08
Public Services	1.51	17.20	21.63	11.12	10.16
Others (Mining & Quarrying, Electricity, Gas & Water, Unknown)	0.85	1.00	1.12	0.47	1.55
Total	100.00	100.00	100.00	100.00	100.00

Note: 1/ Singapore as for Singapore's Resident only

Source: ASEAN Statistical Yearbook 2010

09 ASEAN social development

Table 51
Employment by sector (in percent)

Occupation	Indonesia (2004)	Malaysia (2009)	Philippines (2009)	Singapore (2009) ^{1/}	Thailand (2009)
Professionals, technical and related workers	3.10	20.80	7.40	36.44	8.12
Administrative, executive and managerial workers	0.20	7.50	13.50	15.59	2.78
Clerical and related workers	4.80	9.50	5.50	12.75	3.94
Sales workers and services workers	17.90	17.30	17.80	11.17	17.49
Agricultural, animal husbandry and forestry workers; fishermen and hunters	51.40	11.90	16.40	-	35.77
Production and related workers, transport equipment operators and laborers	22.60	21.20	38.90	20.65	18.99
Others	-	11.80	0.50	3.40	12.91
Total	100.00	100.00	100.00	100.00	100.00

Note: 1/ Singapore as for Singapore's Resident only

Source: ASEAN Statistical Yearbook 2010

09. ASEAN social development

Table 52

Population with access to safe drinking water (in percent)

Country	2003	2005	2006
Brunei Darussalam	99	99	99
Cambodia	34 ^c	63	65
Indonesia ^a	77	80	80
Lao PDR	-	51 ^d	60
Malaysia	95	99 ^{bd}	95
Myanmar	79	78 ^{bd}	80
Philippines ^a	80	80	93
Singapore	100	100	100
Thailand	96 ^c	98 ^d	90
Viet Nam	-	85 ^{bd}	92

Notes: a Percentage of households; b The figure is the one produced and provided by the country, but adjusted by the international agency for international comparability-that is to comply with the internationally agreed standards, definitions and classifications (age group, ISCED, etc) - MDG Indicators, UN Stats; c 2002 data; d 2004 data.

Sources: Brunei Darussalam, Public Works Department, estimated; Cambodia, Ministry of Environment, Cambodia Inter-censal Population Survey 2004; Indonesia, BPS; Lao PDR, NSO APIS; Malaysia, Myanmar (2005 figure) and Viet Nam, UN MDG Indicators; Myanmar, Multiple Indicators Cluster Survey, 2003 Department of Health; Philippines, NSO APIS; Singapore, Public Utilities Board; Thailand National Statistics Office.

09. ASEAN social development

Table 53

Population with access to sanitation facilities (in percent)

Country	2003	2005	2006
Brunei Darussalam	80	-	-
Cambodia	22 ^c	23	28
Indonesia ^a	-	80	80
Lao PDR	-	30 ^c	48
Malaysia	98	98	94
Myanmar	90	83	82
Philippines ^a	86	86	78
Singapore	100	100	100
Thailand	97 ^b	98 ^c	90
Viet Nam	-	61 ^c	65

Notes: a Percentage of Households; b 2002 data; c 2004 data.

Sources: Brunei Darussalam, Department of Statistics; Cambodia, Cambodia Inter-censal Population Survey 2004 and 2005; Indonesia, BPS-Statistics Indonesia; Lao PDR, UNDP, HDR 2006; Malaysia, UN Statistics Division, MDG Indicators; Myanmar, National Sanitation Week, Dept. of Health; Philippines, NSO APIS; Singapore, Public Utilities Board; Thailand National Statistics Office.

09. ASEAN social development

Table 54

Protected Areas as Percentage of Total Land Area

Country	Land Area (km ²)	Total PAs as of 2008 (km ²)	% of PA to Total Land Area (as of 2008)
Brunei Darussalam	5,765	1047*	18.2*
Cambodia	181,035	42,592	23.5
Indonesia	1,890,754	247,269	13.1
Lao PDR	236,800	36,992	15.6
Malaysia	330,252	22,178	6.7
Myanmar	676,577	49456*#	7.3*
The Philippines	300,000	54,491	18.2
Singapore	710	34	4.8
Thailand	513,120	108,958	21.2
Viet Nam	329,315	25,417	7.7
ASEAN	4,464,328	537,931	13.2

Notes: # Protected Area Systems described represent both 3.93% of notified and 3.37% of proposed. Protected areas in Myanmar have not been categorised into International Union for Conservation of Nature (IUCN) classification.

Sources: ASEAN Centre for Biodiversity, compiled from WDPA database (Fish, Lucy. 2008. Personal communication with UNEO-WCMCF GIS Manager on WDPA 2009 pre-release). *updated by AMS



Other ASEANstats Publications:

1. ASEAN Statistical Yearbook 2010
2. ASEAN Economic Community Chartbook 2010
3. ASEAN Community Progress Monitoring System: PAN-ASEAN Indicators Volume 1, 2007
4. ASEAN Community Progress Monitoring System: Country Indicators and Monitoring Tools. Volume 2, 2007
5. ASEAN Brief Progress towards the ASEAN Community 2007
6. AHSOM : A Decade of Cooperation in Statistics

We welcome your comments, queries and data requests.
You may visit, call or email us at:

ASEANstats,
The ASEAN Secretariat
70A Jl. Sisingamangaraja, Jakarta 12110, Indonesia
Tel: 62-21-7262991, 7243372 Ext.275/385/216/184
Fax: 62-21-7398234, 7243504
Email: stats@asean.org.
Website: www.asean.org/aseanstats



One Vision, One Identity, One Community
www.asean.org